

SEDIMENTOLOGY OF THE DENLEY LIMESTONE (MIDDLE ORDOVICIAN, TRENTON GROUP) IN CENTRAL NEW YORK

Charlotte J. Mehrtens
Department of Geology
University of Vermont
Burlington, Vt. 05405

Introduction

The Denley Limestone of the Trenton Group (Middle Ordovician) in central New York is characterized by nearly 90 meters of alternating beds of limestone and shale. The origin of limestone and shale couplets in general is problematic, however, in the case of the Denley Limestone, the limestones can be shown to be bioclastic turbidites in origin. These bioclastic turbidites are recognized by Bouma divisions within the limestone beds. Interbedded shale horizons represent the *in situ* sediment. This sedimentologic interpretation has implications for the paleoenvironmental setting of the Denley Limestone.

This field trip will ask you to address the following questions: (1) How can resedimented carbonates be distinguished from *in situ* sediment? (2) How can tempestites be distinguished from turbidites? (3) Why should one bother with the tempestite/turbidite distinction?

Regional Geology

Outcrops of the Middle Ordovician Trenton Group extend through the St. Lawrence Valley of southern Quebec, the Camplain Valley of New York and Vermont, and eastward through the Mohawk and Black River Valleys of central New York before extending once again into Canada above Lake Ontario (Figure 1). In addition to being so widespread, these rocks have long attracted attention for their abundant and diverse marine faunas. Early models by Kay (1953) for the depositional setting of the Middle Ordovician Trenton Group described an eastward (present coordinate) dipping carbonate ramp which passed into an adjacent shale basin. More recent publications by Cisne and Rabe (1978) and Cisne, et al. (1982a) describe a revised interpretation for the depo-tectonic setting of the Middle Ordovician sequence. These authors suggested that these sediments accumulated in a outer shelf to trench slope

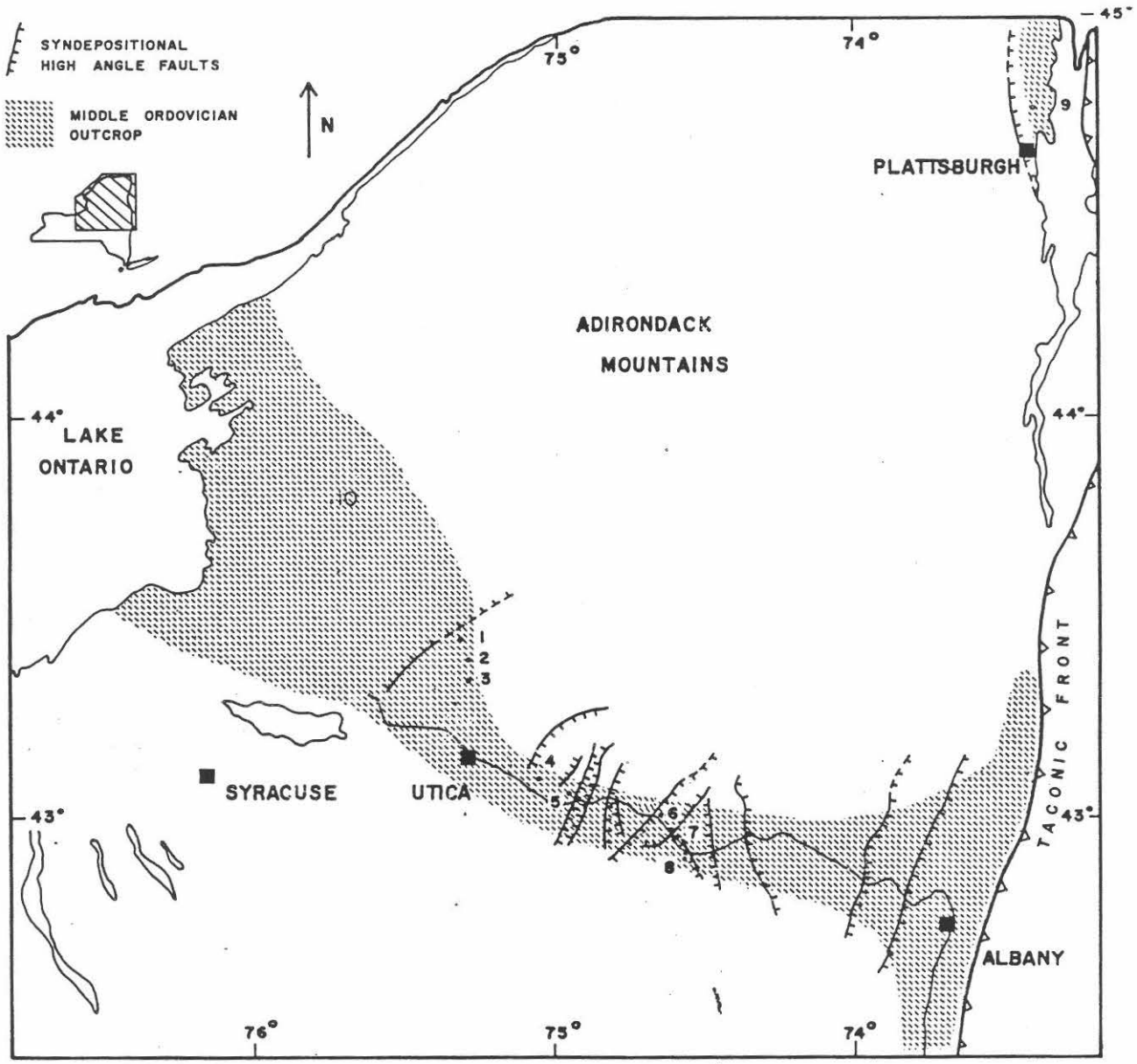


Figure 1. Outcrop map of the Trenton Group in New York State. Key locations include: 1-Trenton Falls Gorge; 2-Buttermilk Creek; 3-City Brook; 4-Herkimer; 5-Little Falls; 6-Caroga Creek; 7-Palatine Bridge; 8-Canajoharie Creek; 9-Beekmantown; 10-Roaring Brook.

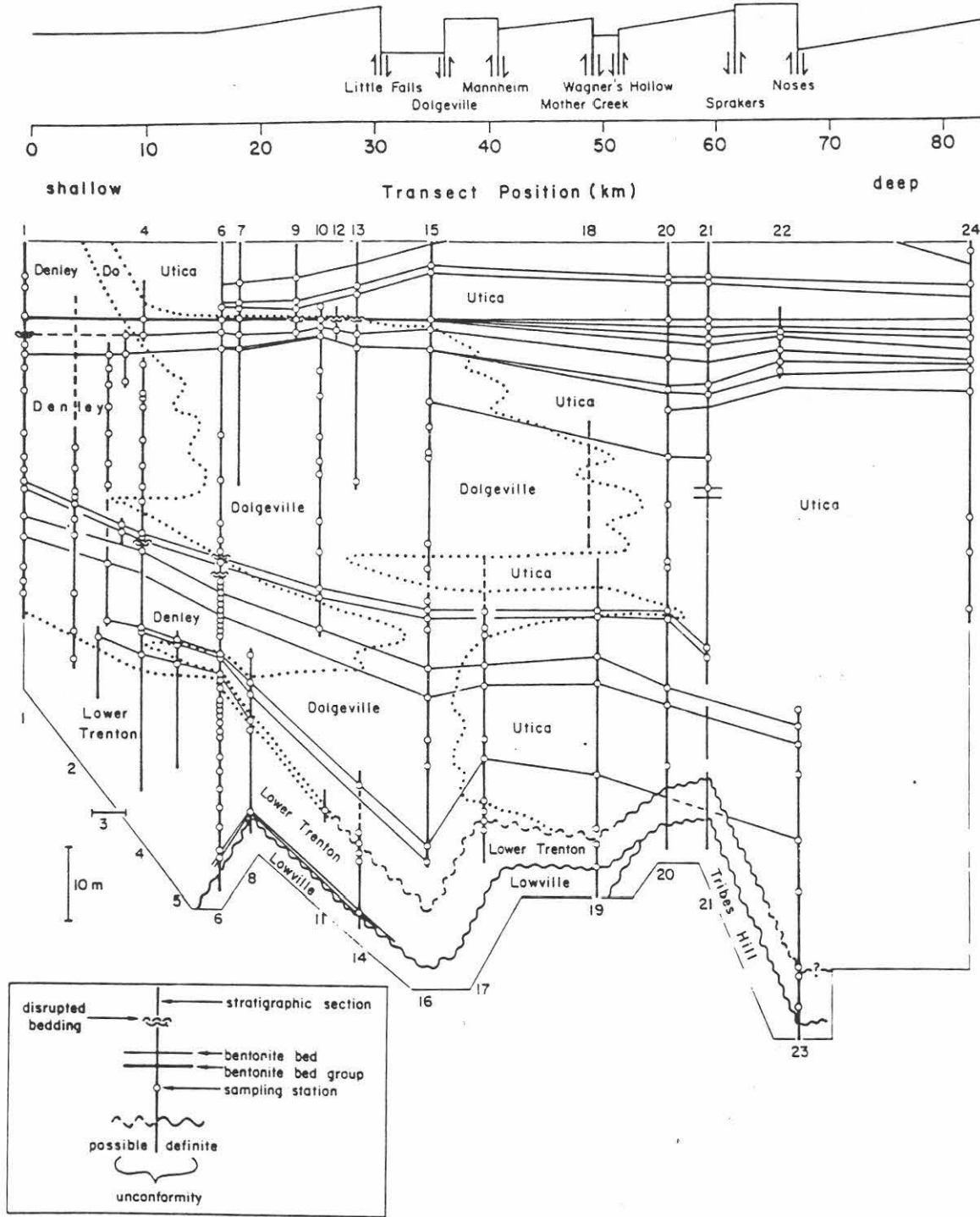


Figure 2. Stratigraphic sections of the Trenton Group and over-and underlying units are represented by vertical lines and have been correlated by bentonites (sub-horizontal lines). Sampling horizons for faunal studies are indicated by circles on vertical lines. The structural cross section at the top of the diagram indicates that the Trenton strata thicken across basins and thin across basement highs, suggesting that faulting was syn-depositional. Sections: 1-Trenton Falls Gorge; 2-Gravesville-Mill Creek; 3-Poland; 4-Rathbun Brook; 5-Shedd Brook; 6-Buttermilk Creek; 7-Farber Lane; 8-Norway; 9-Miller Rd.; 10-North Creek; 11-Gun Club Rd.; 12 & 13-New York State Thruway; 14-Burrell and Bronner Rds.; 15-W. Crum Creek; 16-Dolgeville Dam; 17-E. Canada Creek; 18-Mother Creek; 19-Caroga Creek; 20-Canada Creek; 21-Flat Creek; 22-Currytown Quarry; 23-Van Wie Creek; 24-Chuctanunda Creek. From Cisne and Rabe, 1978.

setting, adjacent to the Taconic Arc. An analogy would be the present day Australian flank of the Timor Trough, where the northwestern Australian carbonate shelf is dissected by numerous high angle block faults which control the thickness and distribution of carbonate lithofacies. Sediments accumulating in these isolated basins are primarily bioclastic turbidites in origin (Veevers, et al., 1978), derived from the adjacent shallow water carbonate shelf. Cisne and Rabe (1978) and Cisne, et al. (1982a) suggested that the Middle and Upper Ordovician strata of central New York were deposited on a fragmented shelf in the foredeep where each fault block accumulated a unique stratigraphy. By using bentonite horizons to correlate fault blocks, Cisne and his coworkers constructed paleotopographic maps which illustrated the existence of local topographic highs and lows superimposed on an overall easterly dipping slope into the trench (Figure 2). A possible mechanism for producing extensional block faults within a compressional tectonic regime was presented by Chapple (1973), who suggested that the formation and passage of a peripheral bulge through the foreland basin would generate extensional faults. Mehrtens (1988) described the existence of syn-depositional block faults in the Taconic foreland basin of southern Quebec and also documented their effect in controlling the stratigraphy and sedimentology of these Middle and Upper Ordovician strata.

Stratigraphy

Kay (1937 and 1953) was the first to present a stratigraphic framework for these units which was later modified by Titus and Cameron (1976) and Titus (1988).

The sedimentology of the basal units of the lower Trenton Group were described in detail by Titus and Cameron (1976) and are interpreted to represent a continuum of progressively deepening environments from lagoonal (Napanee and Selby Formations) to shoal (lower Kings Falls Formation) to shelf facies (middle and upper Kings Falls Formation) and ultimately into deeper water shelf (Sugar River Formation).

The Denley Limestone, the focus of this study, overlies the Sugar River Limestone (Figure 3). At its type locality at Trenton Falls (Figure 1, locality 1) the Denley has been divided into three members, in ascending order the Poland, Russia and Rust Members.

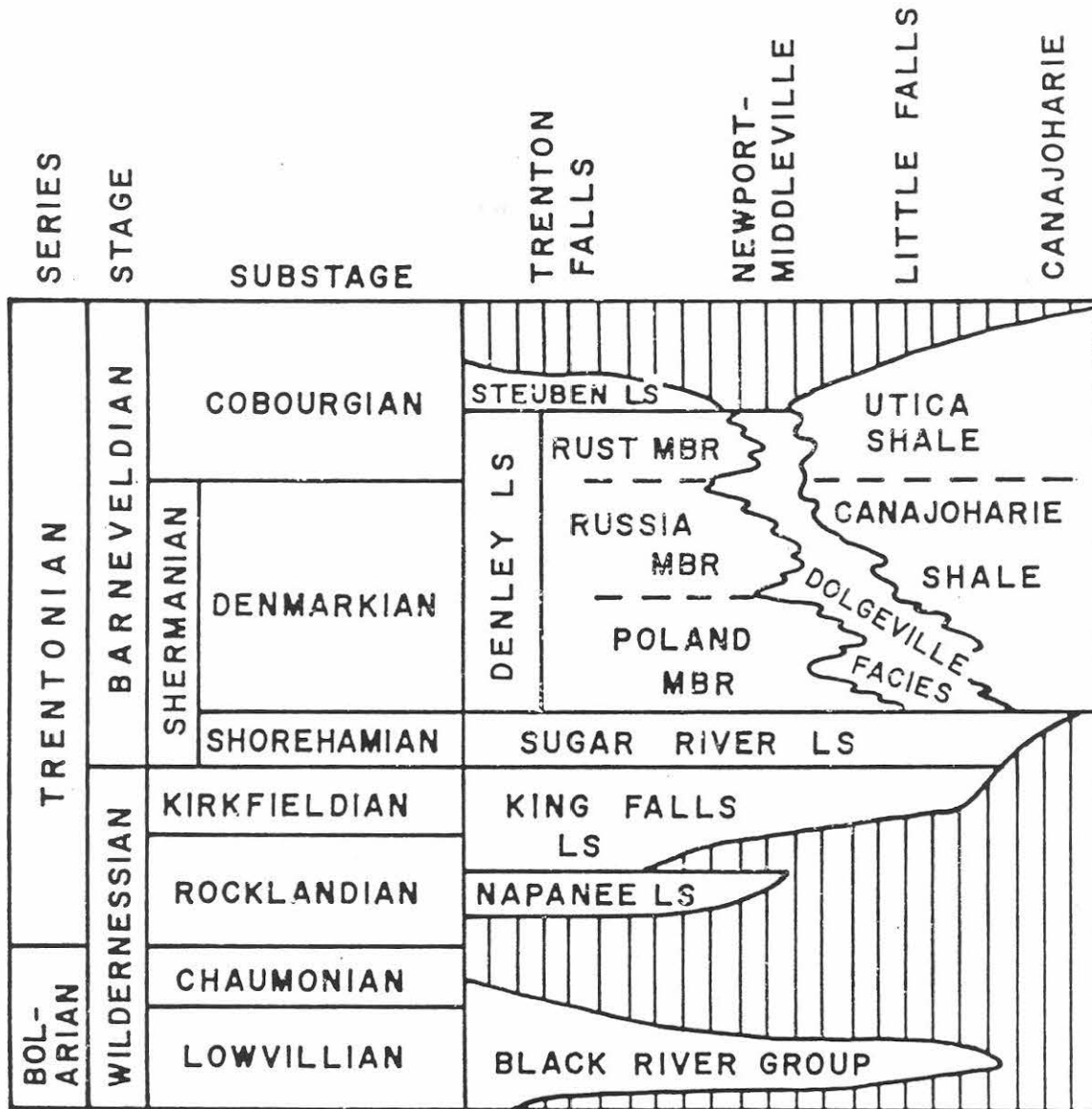


Figure 3. Correlation chart for the Black River and Trenton Groups in central New York, modified from Titus and Cameron (1976).

The contact of the Sugar River and Denley Formations is visible at several localities and appears gradational (Figure 4).

The Denley Limestone is overlain by a variety of units, depending upon position within the basin. At its type section at Trenton Falls the Denley is overlain by the Steuben and Hillier Limestones. Titus (1988) describes the Steuben as a coarse-grained calcarenite bearing wave-generated structures such as cross bedding which he interpretes as a shoal facies. The Hillier Limestone is a finer-grained calcisiltite lacking evidence of wave reworking and is interpreted by Titus as a shelf to outer shelf deposit. These limestones are in turn conformably overlain by the Utica and Canajoharie Shales (Riva, 1972, his figure 16). Eastward of the Trenton Falls type section the Denley is overlain by the Dolgeville Facies, a laminated mudstone with thick shale interbeds, which Kay (1953) described as the transition beds from the Denley to the Canajoharie Shale.

The deepening-shallowing-deepening sequence recorded by the Trenton Group in central New York has been interpreted in various ways. Titus (1988) attributes this oscillation to facies mosaicing accompanying base level changes generated by epeirogeny of the Adirondack Arch. An alternative model proposed by Cisne and Rabe (1978) suggests that bathymetric changes, irregular bottom topography, and condensed stratigraphic sequences result from the activity of syndepositional block faults within the Taconic foreland basin which subsequently exerted control of sedimentation patterns.

Sedimentology of the Denley Limestone

The Denley Limestone occupies a stratigraphic position in the Trenton Group at the culmination of the deepening trend which initiated with the Napae and Selby Formations. The Denley contact with the underlying Sugar River Limestone is gradational and is defined as the first appearance of an unfossiliferous, "lumpy-bedded" mudstone lithology. This lithology is interbedded with fossiliferous wackestone and packstone limestone beds and shale interbeds bearing diverse and abundant assemblages of benthic marine organisms. Figure 4 illustrates the stratigraphy at two outcrops where the Sugar River/Denley contact is well exposed. Although the contact is gradational, the Denley and Sugar River can

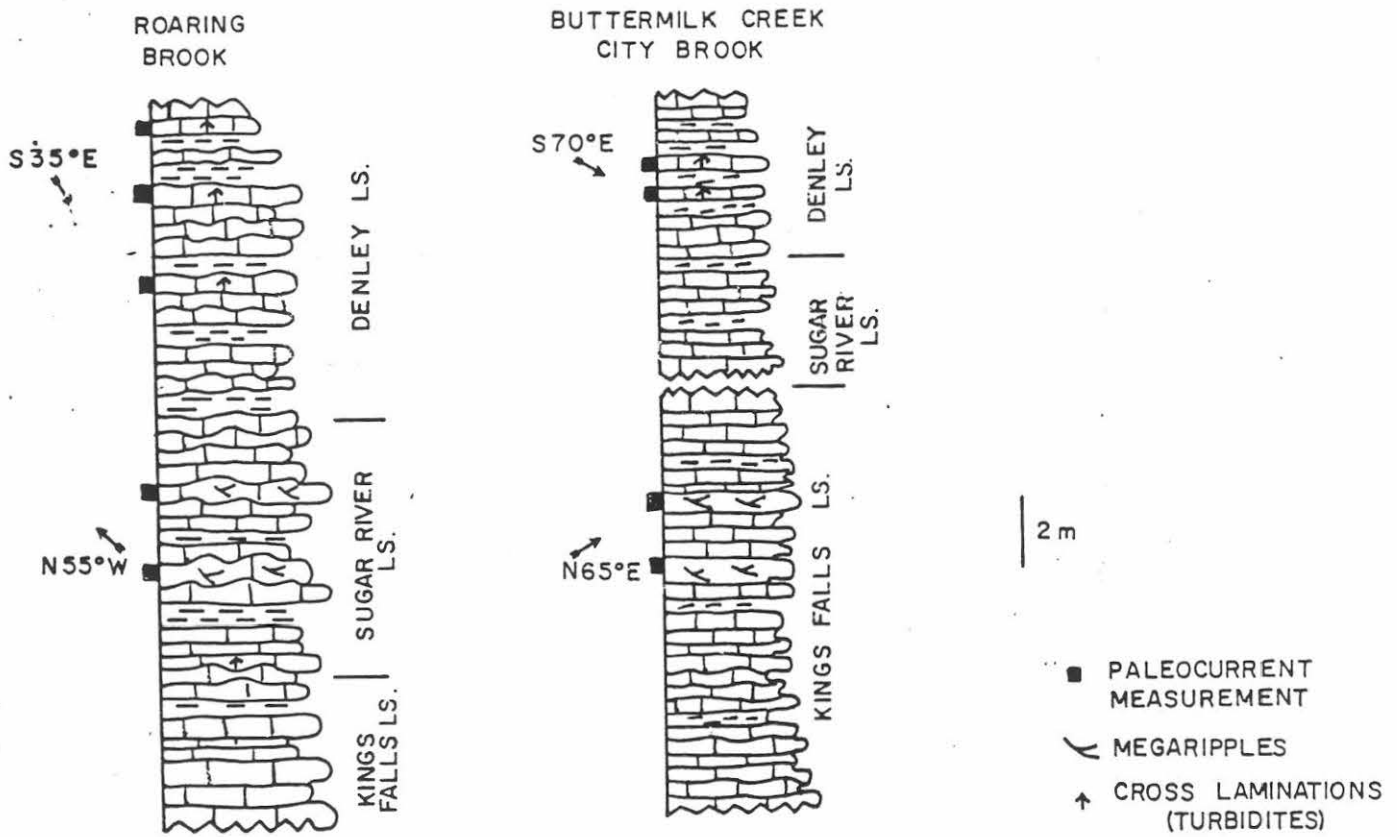


Figure 4. The contact between the Sugar River and Denley Limestones is gradational, for example, as seen at Roaring Brook (Figure 1, locality 10) and Buttermilk Creek/City Brook (Figure 1, locality 3).

be differentiated on the following criteria: (1) the Denley is a wackestone to packstone in composition while the Sugar River is a packstone to grainstone; (2) the Denley has thicker shale interbeds, locally exceeding 1cm in thickness; shale is often absent between limestone beds in the Sugar River; (3) the Denley contains limestone horizons which contain a predictable sequence of sedimentary structures which are interpreted as Bouma divisions; (4) the Denley contains horizons of slump folds and breccias (Figure 5); (5) the Sugar River and underlying Kings Falls Limestones display features which suggest deposition at or near wave base, including beds that pinch and swell, cross bedded grainstones, and tempestite horizons; (6) Paleocurrent measurements from ripple crestline trends are approximately 90 degrees different between the Kings Falls and Sugar River and Denley Limestones, reflecting currents oriented relative to a shoreline or shoal (Kings Falls) versus those oriented downslope (Denley).

The sedimentology of the Denley Limestone was initially undertaken as part of a study on the evolution of the trepostone bryozoan *Prasopora*, whose colonies cover bedding planes throughout the unit (Mehrtens and Barnett, 1979). Initially, the 90-m thick Trenton Group type section at Trenton Falls gorge (Figure 1, locality 1) was sampled and large thin sections were made of entire beds. Petrographic analysis revealed that limestone beds often contained sequences of sedimentary structures, in ascending order: layers of skeletal fragments, mm-scale thickness of planar laminae composed of finely crushed skeletal debris; mm-scale laminae of micrite; bioturbated micrite; and shale (Figure 6). These sequences were identified as Bouma divisions within bioclastic turbidites, suggesting that, at least in part, the Denley Limestone represented turbidite deposition. Following recognition of a bioclastic origin for many of the limestones, sampling to determine the stratigraphic and paleogeographic distribution of the turbidites was undertaken at other Trenton Group exposures. Outcrops sampled included Upper West Canada Creek, Rathbun Brook, Shed Brook, Roaring Brook, City Brook, Caroga Creek, and outcrops around the Champlain Valley of New York and Vermont. In the course of this study it became clear that a comprehensive study of bioclastic turbidites was lacking and that great potential exists for misidentification of bioclastic turbidites with tempestites (see Kreisa, 1981).

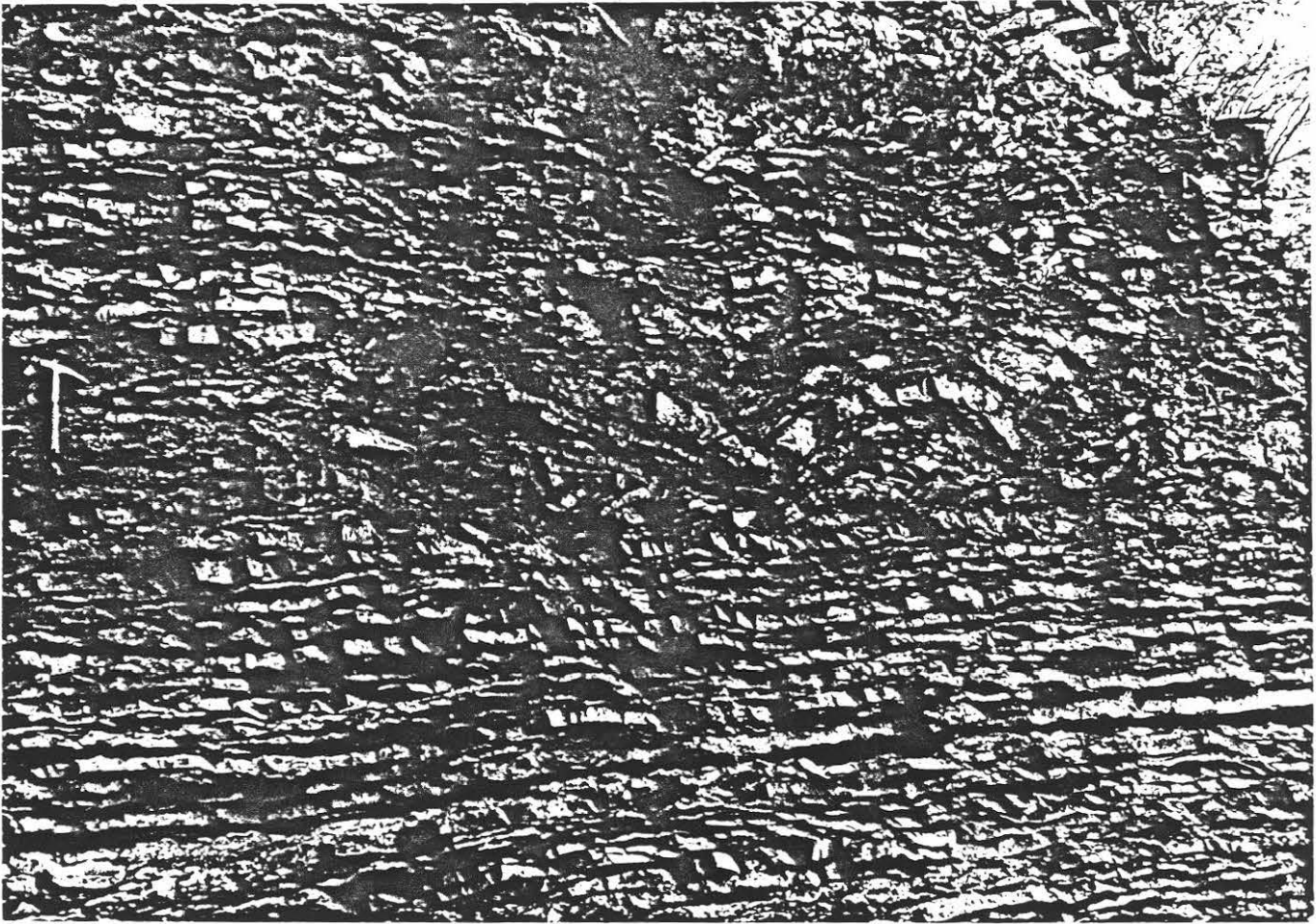


Figure 5. Slump fold and breccia horizon (at hammer level) in the Denley Limestone along West Canada Creek. The presence of brecciated beds indicates that the sediment was at least partially lithified prior to movement, which suggests early, possible submarine, lithification occurred.

COMPOSITE SECTION
 SHED BROOK- W.CANADA CRK

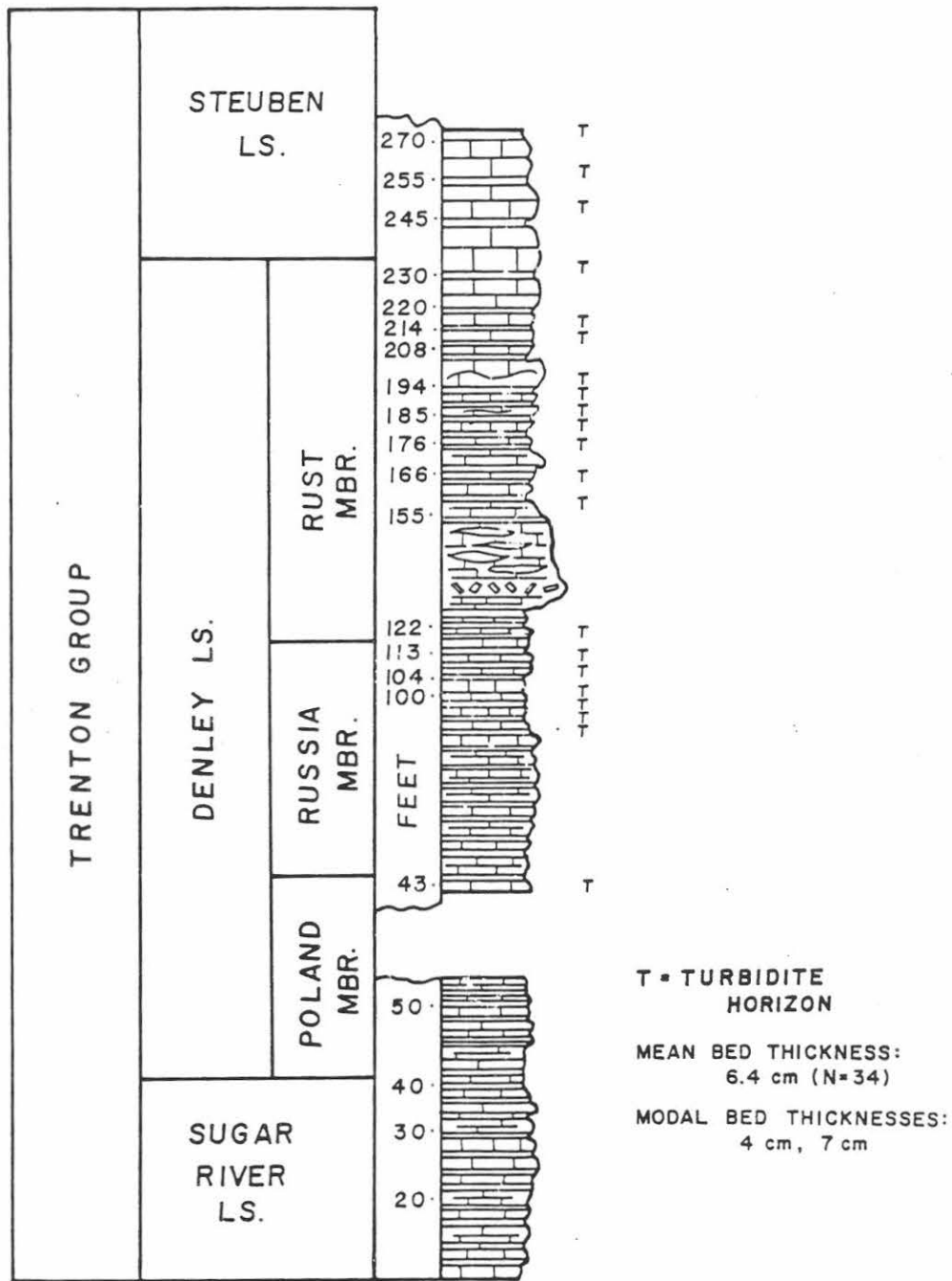


Figure 6. Measured stratigraphic section of the Sugar River-Denley and Steuben Limestones at Shed Brook and West Canada Creek (Trenton Falls Gorge). Horizons which upon thin sectioning were identified as turbidites are indicated by a "T".

Approximately 70% of the Denley Limestone horizons sampled at Trenton Falls Gorge (n=34) are interpreted as resedimented detritus, most likely turbidites, however there are several other lithologies present within this unit (Figure 7). This variety of lithologies are sufficiently different to suggest multiple origins. Three non-turbiditic lithologies present include: (1) wackestone-packstone beds lacking any sedimentary structures; (2) fossiliferous shale interbeds between the limestone horizons; (3) unfossiliferous mudstone beds. Given the abundance of bioclastic turbidite horizons, these three lithologies can be interpreted in light of the turbidite model.

The wackestone-packstone limestone beds contain disarticulated whole and broken skeletal fragments in a matrix containing variable amounts of micrite. No sedimentary structures, such as grading, laminations, or micrite infiltration are seen. Fossil fragments are unsorted in size. This lithology is interpreted to represent an *in situ* accumulation, and, lacking any evidence of resuspension and settling, is thought to have been deposited below wave base. Care must be taken to not confuse these *in situ* accumulations with top or bottom cut-out turbidites. These are turbidites which, due to an absence of either the necessary grain size or hydraulic conditions, do not exhibit complete Bouma divisions. Thin section examination should reveal any internal structures. Also, if there are long periods of time between bioclastic turbidite emplacement, bioturbation can obliterate Bouma structures. A second *in situ* sediment accumulating within the Denley Limestone is the shale present between limestone beds. These beds can be quite thin, forming a veneer on top of the limestones, however they often support diverse benthic communities (Cisne and Chandler, 1982; Cisne, et al., 1982b; Hay and Cisne, 1988). The presence of articulated fossils, including trilobites and articulated crinoid stems, attests to the probable quietude of the waters during the deposition of this material.

The final limestone lithology is the unfossiliferous mudstone whose most diagnostic features are the extensive horizontal burrow traces which cover bedding planes and extend several centimeters into beds and the "lumpy bedding" which can produce up to 10cm of relief on a bedding plane surface. The origin of the "lumpy bedding" is attributed to the burrowing activity of the trilobite *Isotelus*, followed by submarine cementation which preserved the high angles of repose of the sediment. The carbonate mud

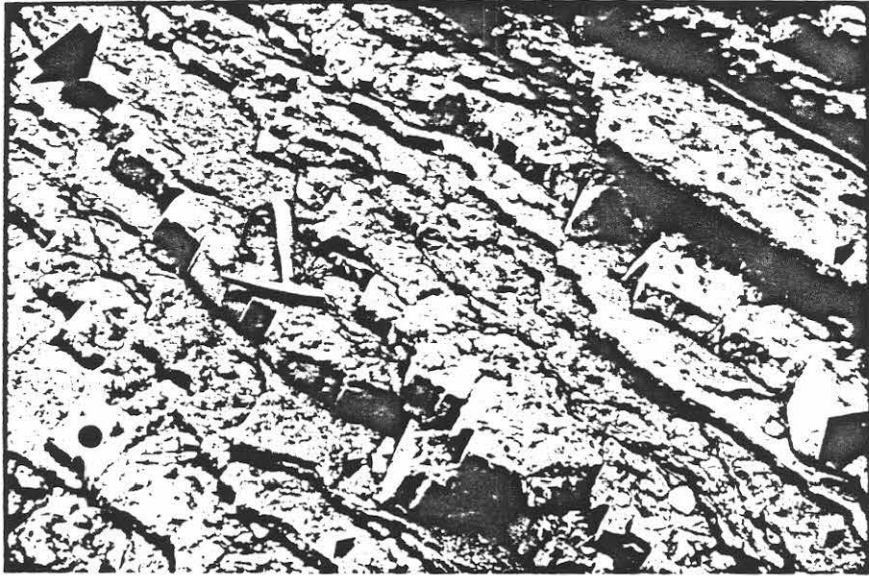


Figure 7. Photograph of the four important lithologies in the Denley Limestone along West Canada Creek. Tubidite beds (largest arrows) are clearly recognizable by their planar bases and bioturbated tops. A bed of the "lumpy mudstone" is labeled with a black dot. Thin beds of packstone-grainstone are indicated with small arrows. The fourth lithology, shale, is present between all limestone beds.

composing this lithology is thought to represent accumulations of peri-platform ooze derived from the adjacent shelf which was resuspended and transported into deeper water in a series of low density turbidity current flows.

The interbedding of these four lithologies suggests that the Denley Limestone was deposited in an outer ramp setting. The bioclastic turbidites and peri-platform ooze were resedimented downslope into an environment where the dominant *in situ* sediments were shale with lesser amounts of in situ fossiliferous limestones. Although turbidites can form in shallow water, an outer ramp, deep water environment for the Denley Limestone is supported by the presence of slump fold and breccia horizons, both of which require a slope on which to form. Orthocone cephalopods oriented parallel to slump fold axes indicate the presence of currents which flowed downslope.

Description of Bioclastic Turbidites

Although bioclastic turbidites have been described by many authors (see Mehrrens, 1988 for references). In all of these numerous examples there was ample supporting information for placing the limestones in a slope or basin environments. Until the recent work of Cisne and his coworkers there was no such model for the Denley Limestone. Furthermore, the Denley Limestone is in gradational contact with a unit (Sugar River Limestone) which has attributes of shallow water deposition. Finally, a great deal of attention has been given to the recognition of limestone tempestites which outwardly appear similar in structure to bioclastic turbidites.

The general characteristics of bioclastic turbidites include: (1) division of beds into a lower graded and upper mudstone portion (Figure 8); (2) mudstone which contains pelagic faunal elements versus shallow water faunas in the lower, graded horizons; (3) graded carbonate skeletal sand units capped by laminated or cross laminated units (Figure 9); (4) planar bases and bioturbated tops; (5) partial to complete Bouma divisions. Table 1 provides a more complete list of the characteristics of bioclastic turbidites compared to those of limestone tempestites. Bioclastic turbidites are structurally similar to siliciclastic turbidites described by Bouma (1962) and hydraulically interpreted by Walker (1965), however there are several noteworthy differences, described below. The coarsest-grained sediment deposited from the initial stages of

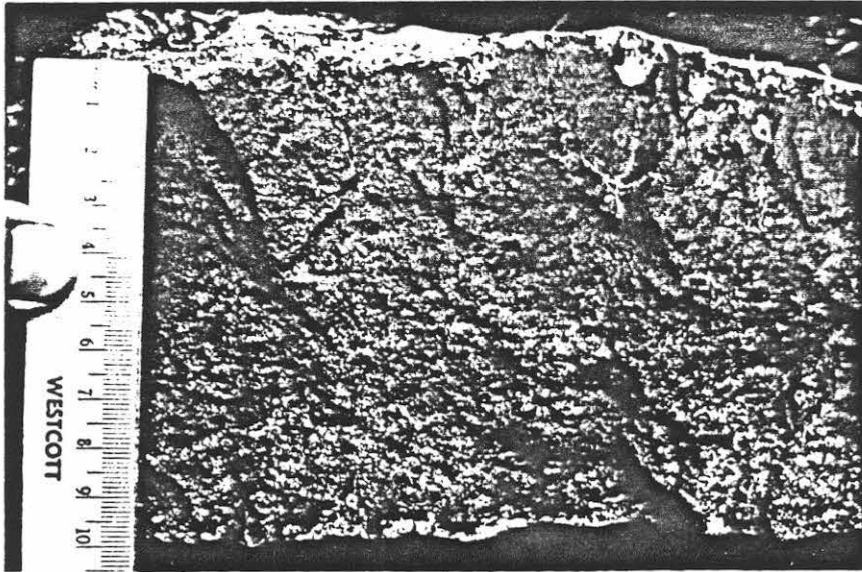


Figure 8. Outcrop photograph of a graded limestone bed. Note the sharp base to the limestone bed, with a concentration of the coarsest skeletal grains, and fining-upwards in skeletal size.

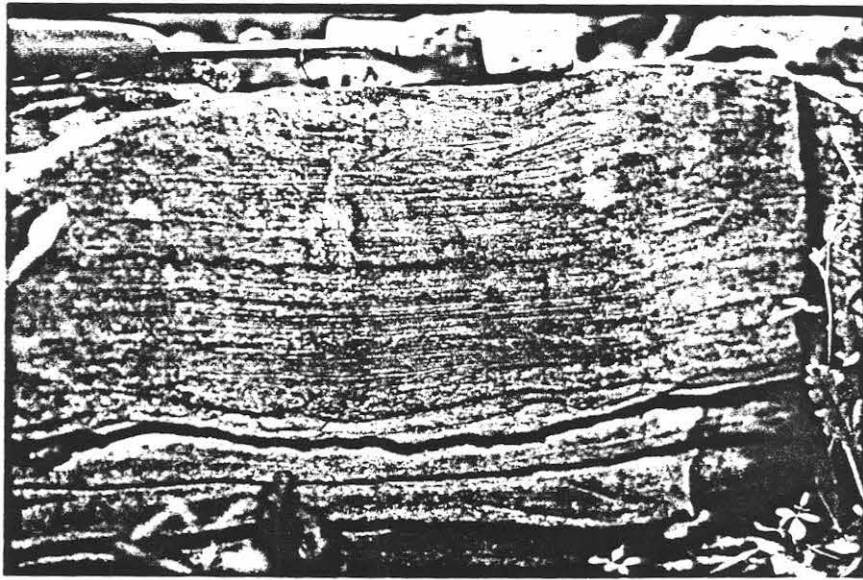


Figure 9. The hammer head rests on a limestone bed which exhibits well defined planar (large arrow) and cross (small arrow) laminations.

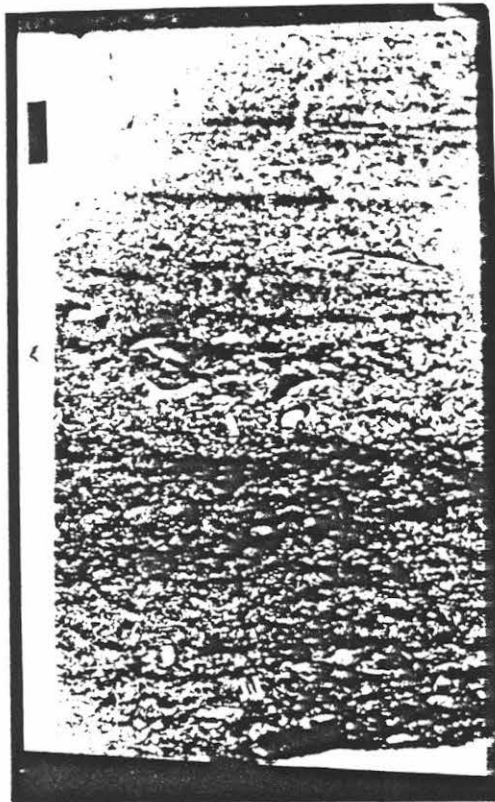


Figure 10. Thin section photomicrograph of a turbidite which exhibits grading in skeletal fragments (Ta). Sample is from the uppermost Rust Member of the Denley Limestone. Bar equals 1 cm.

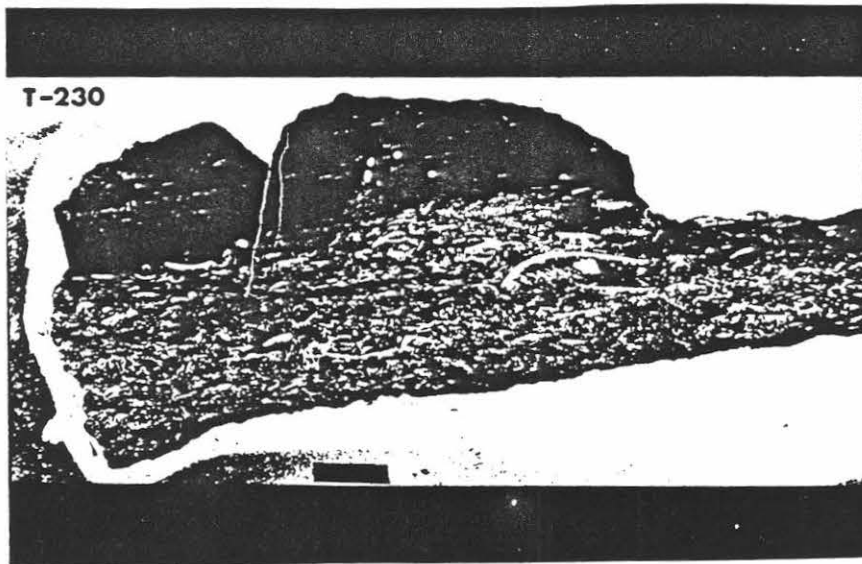


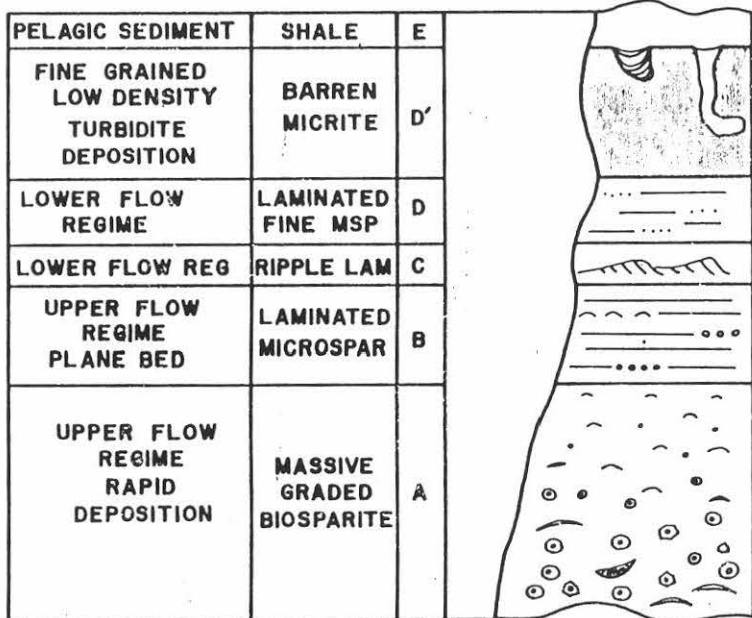
Figure 11. Thin section photomicrograph of a turbidite from the Rust Member of the Denley Limestone which exhibits a coarse-grained skeletal lag (Ta) overlain by structureless micrite (Td'). Bar equals 1 cm.

deceleration of the current form a graded unit (Ta) composed of skeletal material (Figure 10). The high velocity planar laminated unit (Tb) is composed of mm-thin laminae of diminished skeletal material. The third Bouma division, ripple cross laminae (Tc) is present, but uncommon in bioclastic turbidites. These structures are thought to form from either unidirectional waves behind the nose of the turbidity current or by reworking of planar laminations (Tb) into ripples (Walker, 1965), however the formation of ripple laminations requires cohesionless sand and silt-sized material. It is possible that bioclastic material is too cohesive, and the absence of a silt-size equivalent in carbonate sediment is well known. The origin of the fine-grained laminae (Td) in terrigenous mud turbidites is still enigmatic. (Piper, 1972 a & b; Piper, 1978; Rupke, 1975) but in bioclastic turbidites the laminations can be seen to consist of alternations of very finely crushed skeletal grains and their interparticle cement alternating with micrite. Overlying the finely-laminated Td unit should be Te, a structureless pelagic mud. Piper (1978) has summarized the controversy surrounding the origin of this mud which led him to subdivide the mud fraction into E1 (laminated mud), E2 (graded mud), E3, (ungraded mud), and F (hemipelagic mud = shale cap). The barren and frequently bioturbated carbonate mud present at the top of bioclastic turbidites (Figure 11) is designated Td' (Td prime), a name chosen to most accurately reflect the genetic association with the finely-laminated turbidite material below than with the inter-turbidite material above. Overlying the micrite of Td' is the terrigenous shale (Te) which is often colonized by benthic organisms. Burrowing activity of these organisms often extends well into the turbidite beneath, destroying primary sedimentary structures. Several authors (Piper, 1978; Hesse, 1975; Scholle, 1971) have described this type of bioturbation as diagnostic of post-turbidite recolonization of substrates.

Terminology for describing the internal structures of bioclastic turbidites follows that proposed by Einsele (1982) where "T" designates a turbidite origin (as opposed to "S" for storm, or tempestites), and lower case letters a through e designate the specific bedform. Therefore, Ta = turbidite layer of coarse-grained graded material; Tc = cross laminated turbidite layer, and Tac = vertical sequence of graded to cross laminated layers (Figure 12).

Although the internal structures present within bioclastic turbidites are clearly identical to Bouma divisions there still exists

CARBONATE TURBIDITE



CLASTIC TURBIDITE

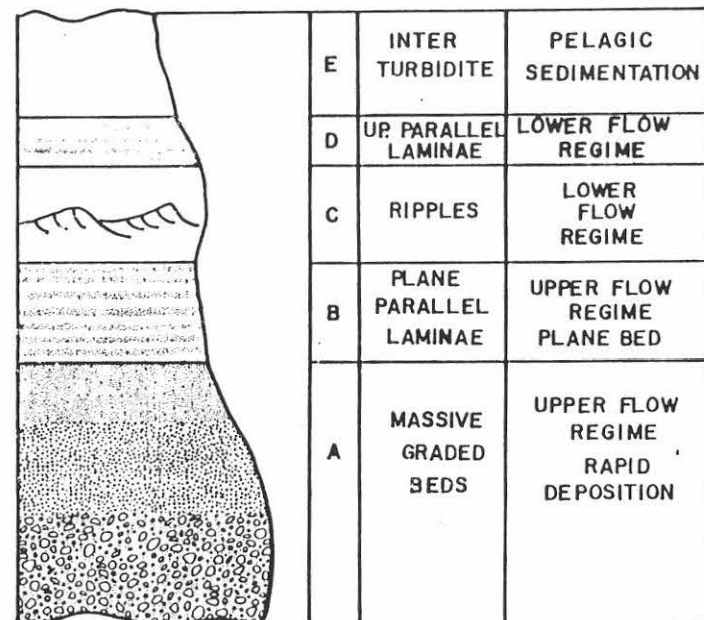


Figure 12. Comparison of the terminology and hydraulic interpretation of bioclastic (left) and clastic (right) turbidites. The primary difference lies in the addition of a structureless micrite (Td') in the limestone.

the possibility of mis-identification of turbidites with tempestites. Table 1 shows how subtle some of these differences can be. One analytical technique which has proven to be extremely useful in identifying turbidites has been employment of a simple statistical analysis of the relationship between grain size and bed thickness. Crevello and Schlager (1980) and Kelling and Mullin (1975) employed similar strategies, which are based on the hypothesis that a relationship should exist between the grain size of the sand (in this case skeletal sand) material comprising the turbidite and the size of the turbidity current. Since the storm resuspension of sediment and subsequent settling is the process identified for producing graded tempestites, there is no reason why these types of deposits would exhibit this relationship. A linear regression analysis of skeletal grain size versus the thickness of the Ta layer shows a high degree of correlation (Figure 13).

A second valuable indicator of turbidite origin of a graded or cross laminated limestone bed is the absence of infiltration structures in the uppermost micrite layer (Td'). Kreisa (1981) describes the internal structures produced by storm resuspension and settling, including the late stages of fallout of the finest-grained carbonate mud fraction. The mud settles out and infiltrates around the underlying skeletal grains, which, in addition to producing many shelter fabrics, produces micrite drapes around grains. This type of fabric is not present within turbidites as the sedimentation of micrite is part of the continuum of deposition of coarser through finer grain sizes.

Finally, the presence of escape burrows are highly diagnostic of tempestites. Organisms picked up and deposited during resuspension and settling quickly burrow to the surface, producing traces which rise from the base to top of the bed. Turbidites, on the other hand, scour across the surface as they travel downslope, incorporating skeletal material into the traction carpet. Upon coming to rest the newly-formed bedding plane surfaces are recolonized and burrows descend from this upper surface into the layers below. No escape burrows have been described from modern bioclastic turbidites, so apparently organisms which become incorporated into turbidite flows do not survive transport.

Is the distinction between bioclastic turbidites and tempestites worth making? Certainly there are bathymetric associations for the two types of resedimented limestones. Although bioclastic

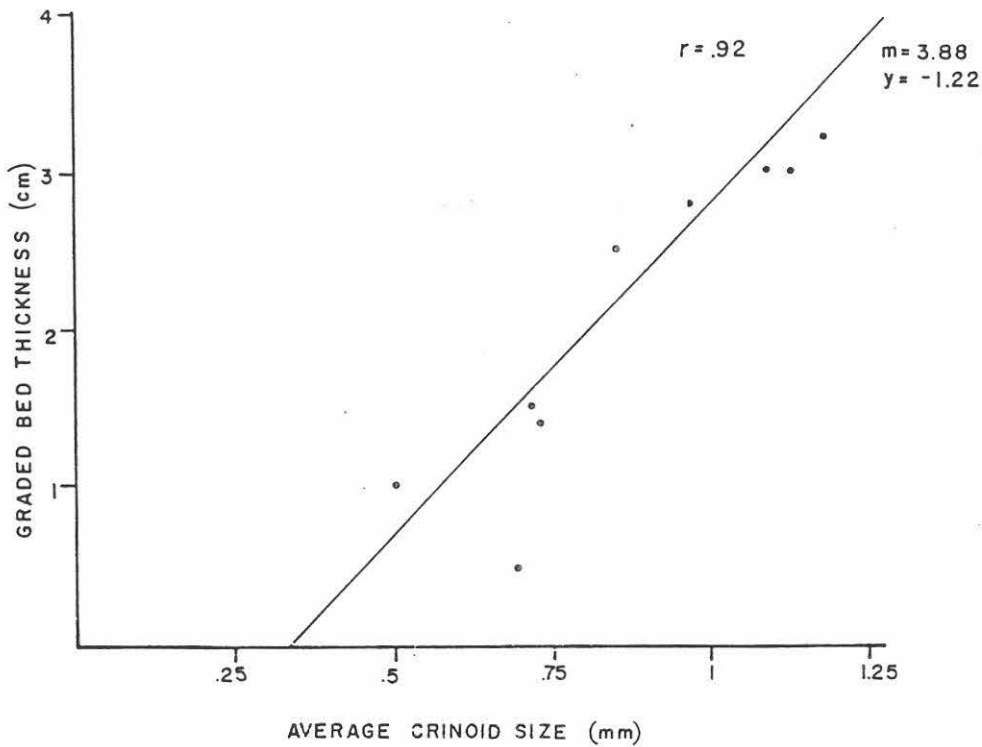


Figure 13. In order to demonstrate the turbidite origin of the graded limestones the diameter of crinoid ossicles were measured and plotted versus the thickness of the graded beds in which they are found. The best fit line and correlation coefficient ($=0.92$) produced by a linear regression analysis indicates that there is a relationship between these two variables, a documented property of turbidites.

turbidites need not form in deep water, their preservation is greatly enhanced at depths below wave base and in the absence of concentrated numbers of burrowing organisms. Tempestites, on the other hand, are often associated with depths near wave base (Kriesa, 1981) and therefore record a specific range of bathymetries between fairweather and storm conditions. Thus, paleoenvironmental reconstructions would depend on the accurate identification of turbidites versus tempestites. As Hamblin and Walker (1979) demonstrated so successfully in a siliciclastic sequence, it is possible to identify the transition from the storm-dominated to turbidite-dominated portions of a shelf. If the turbidites accumulated in a slope apron setting, the "traditional" facies associations of deep sea submarine fan turbidites would be lacking, thus making the distinction between turbidites and tempestites even more difficult.

Depositional Model for the Denley Limestone

Any model for the depositional setting of the Denley Limestone must take into account several different lines of evidence: (1) The stratigraphic position of the unit between the underlying shallow water Kings Falls and Sugar River Limestones and overlying black shales of the Utica and Canajoharie Shales. This evidence suggests that the unit is transitional in its bathymetry from shallow ramp to deep water basin. (2) The depo-tectonic setting of the Denley Limestone proposed by Cisne and his coworkers places the unit in a fragmenting foreland basin flanked to the east by a foredeep and to the west by a shallow water ramp. (3) The Denley Limestone consists of four lithologies of which bioclastic turbidites and interbedded shale are the most abundant.

Turbidites can accumulate in two very different settings, one associated with submarine fans and the other with slope aprons. Submarine fan deposits would contain evidence of channelized and interchannel flow, lobate distribution patterns from point sources, and coarsening-upward sequences, none of which are found in the Denley Limestone. Slope aprons, on the other hand, can form on slopes of low angle along a line source, exhibit great lateral continuity of beds, contain few breccia or slump horizons, and lack evidence of channelization. For these reasons, the sediment of the Denley Limestone is interpreted as having formed in a slope apron setting on the distal portion of a fault-dissected, eastward dipping ramp.

Characteristics of Tempestites and Turbidites

Tempestites

1. internal structures, although similar to Bouma divisions lack their repetitive consistency^{1,2}
2. association with Skolithos burrows²
3. lateral continuity of beds on the order of 10's meters²
4. strongly lenticular bedding⁴
5. multiple paleocurrents: fairweather and storm^{1,3,4}
6. association with wave-generated bedforms^{5,4}
7. association with hummock cross stratification^{6,3,4}
8. lateral facies grading into normal marine litho and biofacies²
9. escape burrows⁷
10. amalgamated beds⁴

Turbidites

1. planar bases, often with scours^{8,9}
2. ubiquitous grading and horizontal laminations^{8,10,11,12,13,14}
3. multiple internal Bouma divisions⁸
4. burrowing restricted to the upper few cm^{11,12,13,14}
5. load casts and convolute laminations¹¹
6. association with slump fold horizons and allochthonous blocks⁹
7. resedimented shallow water allochems⁹
8. oriented fossils¹⁴
9. lateral continuity of beds over 100's meters¹¹
10. interbedding with pelagic sediments and faunas^{12,13}

Distinguishing Features of Turbidites

1. absence of escape burrows
2. consistency of internal structures
3. association of couplets with deep water facies
4. extreme lateral continuity of beds
5. multiple internal Bouma divisions
6. unidirectional paleocurrents
7. association with slump folds

Sources: 1-Kelling and Mullin, 1975
2-Benchley, Newell and Stanistreet, 1979
3-Seilacher, 1982
4-Aigner, 1982
5-Nelson, 1982
6-Hamblin and Walker, 1979

7-Reineck and Singh, 1972
8-Tucker, 1969
9-Piper, 1972b
10-Piper, 1972a 1972
11-Scholle, 1971
12-Rupke, 1975

13-Hesse, 1975
14-Piper, 1978

References Cited

- Aigner, T., 1982, Calcareous tempestites: storm-dominated stratification in Upper Muschelkalk Limestones (Middle Trias, SW Germany): in, Einsele, G. and A. Seilacher, eds., Cyclic and Event Stratification, Springer-Verlag, Berlin, p. 180-198.
- Bennetts, K. and P. Pilkey, 1976, Characteristics of three turbidites, Hispaniola Basin: GSA Bull. v. 87, p. 1291-1354.
- Bornhold, B. and O. Pilkey, 1971, Bioclastic turbidite sedimentation in Columbus Basin, Bahamas: GSA Bull., v. 82, p.1341-1354.
- Bouma, A., 1962, Sedimentology of some flysch deposits: Elsevier, Amsterdam, 168p.
- Brenchley, P. , G. Newall, I. Stanistreet, 1979, A storm surge origin for sandstone beds in an epicontinental platform sequence, Ordovician, Norway: Sedimentary Geology, v. 22, p. 185-217.
- Chapple, W., 1973, Taconic orogeny: Abortive subduction of the North American continental plate?: GSA Abstr. with Prog., v.5, p. 573.
- Cisne, J. and B. Rabe, 1978, Coenocorrelation: Gradient analysis of fossil communities and its applications in stratigraphy: Lethaia, v. 13, p. 47-59.
- Cisne, J. and G. Chandlee, 1982, Taconic foreland basin graptolites: Age zonation, depth zonation and use in ecostratigraphic correlation: Lethaia, v. 15, p. 343-363.
- Cisne, J., J. Molenock, B. Rabe, 1980, Evolution in a cline: The trilobite *Triarthrus* along an Ordovician depth gradient: Lethaia, v. 13, p. 47-59.
- Cisne, J, D. Karig, B. Rabe, B. Hay, 1982a, Topography and tectonics of the Taconic outer trench slope as revealed through gradient analysis of fossil assemblages: Lethaia, v. 15, p. 229-246.

Cisne, J., G. Chandler, B. Rabe, J. Cohen, 1982b, Clinal variation, episodic evolution, and possible parapatric speciation: The trilobite *Flexicalymene senaria* along an Ordovician depth gradient: Lethaia, v. 15, p. 325-341.

Einsele, G., 1982, General remarks about the nature, occurrence and recognition of cyclic sequences (periodites): in, Einsele, G. and A. Seilacher, eds., Cyclic and Event Stratification, Springer-Verlag, Berlin, p.3-7.

Hamblin, A. and R. Walker, 1979, Storm-dominated shallow marine deposits: the Fernie-Kootenay (Jurassic-transition, southern Rocky Mountains: Can. Jour. E. Sci., v. 16, p. 1673-1690.

Hay, W., 1969, Calcareous nannofossils and deep sea stratigraphy of the western South Atlantic and Caribbean: GSA Abstr. with Progr., v. 1, p. 93-94.

Hay, B. and J. Cisne, 1988, Deposition in the Oxygen-Deficient Taconic Foreland Basin, Late Ordovician: in, Keith, B., ed., The Trenton Group (Upper Ordovician Series) of Eastern North America, A.A.P.G. Short Course no. 29, p.113-134.

Hesse, R., 1975, Turbiditic and non-turbiditic mudstone of Cretaceous flysch sections of the East Alps and other basins: Sedimentol., v.22, p. 387-416.

Kay, G. M., 1937, Stratigraphy of the Trenton Group: GSA Bull., v. 48, p. 233-302.

Kay, G. M., 1953, Geology of the Utica Quadrangle, New York, New York State Museum Bull., no. 347, 126p.

Kelling, G. and P. Mullin, 1975, Graded limestone and quartzite couplets: Possible storm deposits from the Moroccan Carboniferous: Sediment. Geol., v. 13, p. 161-190.

Kreisa, R., 1981, Storm-generated sedimentary structures in subtidal marine facies with examples from the Middle and Upper Ordovician of southwestern Virginia: Jour. Sed. Pet., v. 51, p. 823-848.

- Mehrtens, C., 1988, Comparison of foreland basin sequences: The Trenton Group in southern Quebec and central New York, in, B. Keith, ed., The Trenton Group (Upper Ordovician Series) of Eastern North America, AAPG Studies in Geology no. 29, p.139-145.
- Mehrtens, C., 1988, Bioclastic Turbidites in the Trenton Limestone: Significance and Criteria for Recognition, in, B. Keith, ed., The Trenton Group (Upper Ordovician Series) of Eastern North America: AAPG Studies in Geology no. 29, p. 87-112.
- Mehrtens, C. and S. Barnett, 1979, Evolutionary change in the bryozoan genus *Prasopora* as a tool for correlating within the Trenton Group (Middle Ordovician); Geol. Soc. Am. Abstr. with Prog., v. 11, p. 44.
- Nelson, C., 1982, Modern shallow water graded sand layers from storm surges, Bering Shelf: A mimic of Bouma sequences and turbidite systems: Jour. Sed. Pet., v. 52, p. 537-545.
- Piper, D., 1972a, Turbidite origin of some laminated mudstones: Geological Magazine, v. 109, p. 115-126.
- Piper, D., 1972b, Sediments in the Middle Cambrian Burgess Shale, Canada, Lethaia, v. 5, p. 169-175.
- Piper, D., 1978, Turbidite muds and silts on deep sea fans and abyssal plains, in, Stanley, D. and G. Kellings, eds., Sedimentation in submarine canyons, fans and trenches: Dowden, Hutchinson and Ross, New York, p. 163-176.
- Reineck, H. and I. Singh, 1972, Genesis of laminated sand and graded rhythmites in storm-sand layers of shelf mud: Sedimentol., v. 18, p. 123-128.
- Riva, J., 1972, Stratigraphy and structure of the St. Lawrence Lowland of Quebec, in, Clark, T., ed., Intern. Geol. Congress Guidebook, Field Excursion C 52, Montreal, 78p.
- Rupke, N., 1975, Deposition of fine-grained sediments in the abyssal environment of the Algero-Balaeric Basin, western Mediterranean Sea: Sedimentol., v. 22, p. 95-109.

Scholle, P., 1971, Sedimentology of fine-grained deep water carbonate turbidites, Monte Anatola Flysch (Upper Cretaceous), Northern Apennines, Italy: GSA Bull., v. 82, p. 629-659.

Seilacher, A., 1982, Distinctive features of sandy tempestites, in, Einsele, G. and A. Seilacher, eds., Cyclic and Event Stratification, Springer-Verlag, Berlin, p. 333-349.

Titus, R., 1988, Facies of the Trenton Group of New York, in, B. Keith, ed., The Trenton Group (Upper Ordovician Series) of eastern North America: A.A.P.G. Studies in Geology no. 29, p. 77-86.

Titus, R., and B. Cameron, 1976, Fossil communities of the lower Trenton Group (Middle Ordovician) of central and northwestern New York State: Jour. Paleont., v. 50, p. 1209-1225.

Tucker, M., 1969, Crinoidal turbidites from the Devonian of Cornwall and their paleogeographic significance: Sedimentol., v. 13, p. 281-290.

Veevers, J., D. Falvey,, S. Robins, 1978, Timor Trough and Australia: Facies show topographic wave migrated 80km during the past 3 m.y.: Tectonophysics, v. 45, p.217-227.

Walker, R., 1965, The origin and significance of the internal structures of turbidites: Proceedings, Yorkshire Geological Soc., v.35, p. 1-35.

FIELD TRIP ROAD LOG
SEE BRETT AND BAIRD, THIS VOLUME