

ACADIAN EXTENSION AROUND THE CHESTER DOME, VERMONT

by

Paul Karabinos, Department of Geosciences, Williams College, Williamstown, MA 01267

INTRODUCTION

Low-angle normal faults are important both in regions undergoing crustal extension and in mountain belts dominated by crustal shortening. Extension and shortening may be coeval in mountain belts, as has been proposed for the high Himalayas (Hodges et al., 1992) and Tibetan plateau (Molnar and Tapponnier, 1978), or extension may postdate shortening and thickening of continental crust, as has been suggested for the Basin and Range province (Coney, 1979; Sonder et al., 1987). Extension was also an important process in the evolution of ancient mountain chains (e.g. the Alps, Selverstone et al., 1984; Selverstone, 1985).

Although extension appears to be a fundamental process during orogenesis, major Paleozoic normal faults in the Appalachians have not been widely recognized. A notable exception is the Lake Char-Honey Hill fault in southeastern New England, which has been interpreted as an Alleghenian low-angle normal fault (Goldstein, 1989; Getty and Gromet, 1992). Before Goldstein's (1989) breakthrough work showed that the sense of displacement was normal on this fault, it was universally regarded as a thrust. Astonishingly little evidence exists for normal faulting during the Acadian orogeny in the New England Appalachians. Castonguay et al. (2001) presented thermochronological evidence for Silurian to Early Devonian exhumation and extension along the St. Joseph fault in Quebec, and Spear (1992) suggested that the Monroe Line along the New Hampshire-Vermont border might be a normal fault based on contrasting styles of metamorphism of rocks across the contact.

Karabinos (1999, 2000) proposed that faults previously interpreted as Taconic thrusts around the Chester dome in southeastern Vermont (Thompson et al., 1990; Ratcliffe et al., 1997) are really Acadian normal faults. This field trip presents evidence for an extensional shear zone around the Chester dome and explores the tectonic implications of Early Devonian crustal extension. If normal faulting occurred in western New England, an entirely new aspect of the Acadian orogeny will have to be taken into account in tectonic reconstructions, the interpretation of geologic maps, and models of ore genesis within the belt.

GEOLOGIC SETTING

Lithotectonic Units

The Berkshire and Green Mountain massifs and the Chester dome are cored by Middle Proterozoic Grenvillian basement (see Karabinos and Aleinikoff (1990), Ratcliffe et al. (1997), and Karabinos et al. (1999) for some geochronological constraints). West of the massifs, the Taconic klippen are composed of Late Proterozoic to Middle Ordovician slate and phyllite originally deposited as shale and siltstone on the continental slope and rise of the passive Laurentian margin (Fig. 1). The klippen structurally overlie a coeval sequence of clastic and carbonate rocks, which formed on the continental shelf of Laurentia. East of the massifs, the Tyson, Hoosac, and Pinney Hollow Formations are equivalent to the basal units found in the Taconic klippen. The Rowe Formation in Massachusetts and the Ottauquechee and Stowe Formations in Vermont form the remnants of an accretionary wedge of oceanic crust and sediments, and the Moretown Formation contains forearc basin deposits (Fig. 1; Rowley and Kidd, 1981; Stanley and Ratcliffe, 1985). The Shelburne Falls arc (Fig. 1) is composed of the Barnard Volcanic Member of the Missisquoi Formation in Vermont and the Hawley Formation in Massachusetts (Karabinos et al., 1998). The Collinsville Formation and the Hallockville Pond Gneiss in Massachusetts are also part of the Shelburne Falls arc, but they form isolated bodies. The Connecticut Valley trough (Fig. 1) contains metasedimentary and metavolcanic rocks of Silurian to Early Devonian age.

Taconic and Acadian Orogenies

During the Ordovician Taconic orogeny (470 to 455 Ma), Laurentia collided with an island arc that formed above an east-dipping subduction zone. The characteristic deformation pattern was westward-directed thrusting of rocks of the continental margin, accretionary wedge, forearc basin, and arc complex (Rowley and Kidd, 1981; Stanley and Ratcliffe, 1985). Until recently the Bronson Hill arc in western New Hampshire and central Massachusetts (Fig. 1) was commonly identified as the arc that collided with Laurentia. However, Tucker and Robinson (1990) pointed out that the 454 to 442 Ma age range of volcanic and plutonic rocks in the Bronson Hill arc is younger than some metamorphic cooling ages from rocks caught in the Taconic collision zone (e.g. Laird et al.,

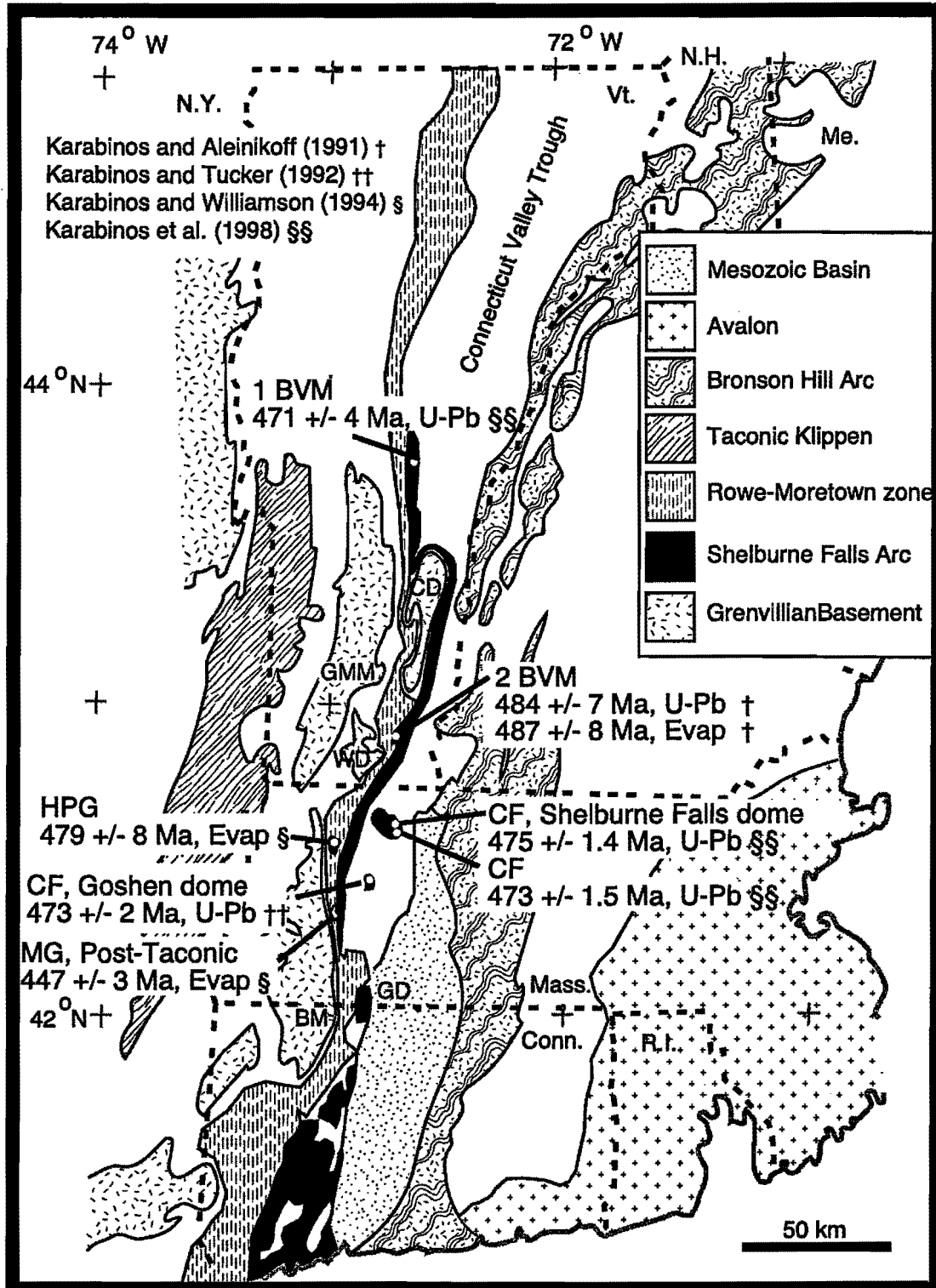


Figure 1. Tectonic map of New England and summary of U-Pb and single-grain evaporation (evap) zircon ages from the Shelburne Falls arc in western New England. Shelburne Falls arc rocks include the Barnard Volcanic Member (BVM), Collinsville Formation (CF), and Hallockville Pond Gneiss (HPG). The post-Taconic Middlefield Granite (MG) indicates that Taconic thrusting ended before ca. 447 ± 3 Ma. GMM- Green Mountain massif. BM- Berkshire massif. WD- Wilmington dome. GD- Granville dome. CD- Chester dome.

1984). Karabinos et al. (1998) argued that the older Shelburne Falls arc (485 to 470 Ma) in eastern Vermont and western Massachusetts (Fig. 1) collided with Laurentia during the Taconic orogeny, and that the Bronson Hill arc formed above a west-dipping subduction zone after a reversal in subduction polarity. Karabinos et al. (1998) further suggested that this new west-dipping subduction zone accommodated plate convergence, thus bringing the Taconic orogeny to an end and setting the stage for the Acadian orogeny. According to this model, the Laurentian margin was active during the Silurian and the Connecticut Valley trough formed as an extensional back-arc basin above a west-dipping subduction zone (Karabinos et al., 1998; Karabinos, 1998).

The Acadian orogeny began in the Late Silurian and continued into the Middle Devonian; it resulted from the protracted collision of Laurentia and Composite Avalon (Robinson et al., 1998, Bradley et al., 2000, Tucker et al., 2001). Studies using high-precision geochronology have demonstrated that what was formerly regarded as a single 'Acadian' orogeny is, in fact, a complex series of tectonic events spanning tens of millions of years (Robinson et al., 1998; Bradley et al., 2000, Tucker et al., 2001). Bradley (1983) proposed that the collision occurred above two subduction zones, one dipping beneath each continental margin, but other models invoke a single subduction zone under Avalon (e.g. Robinson et al., 1998, Tucker et al., 2001).

In western New Hampshire and eastern Vermont, including the area of the Chester dome, two important phases of the Acadian orogeny have long been central to structural models and were portrayed on the Geologic Map of Vermont (Doll et al., 1961). According to this interpretation, an early nappe stage created kilometer-scale recumbent folds, and a later dome phase refolded the early nappes (e.g., Rosenfeld, 1968; Hepburn et al., 1984; Thompson et al., 1993). Ratcliffe et al. (1997) and Hickey and Bell (2001), however, questioned this long-standing structural interpretation and argued for more complex Acadian folding histories to explain the structures in and around the Chester dome.

In my opinion, the nappe and dome stages of deformation explain much of the structural geometry of the region, although I am not convinced that the nappes involved units structurally below the Silurian and Devonian sequence. However, an important gap in our understanding of the tectonic history of this area is a mechanism for the dramatic thinning of units around the Chester dome and other structures, including the Wilmington dome and the Jamaica anticline. I believe that the evidence points to an intermediate period of extension along a normal-sense shear zone after the nappe stage of deformation but prior to the doming stage.

Timing of Acadian Events

The age of Acadian deformation and metamorphism in southeastern Vermont is reasonably well constrained by a variety of isotopic studies. $^{40}\text{Ar}/^{39}\text{Ar}$ hornblende cooling ages indicate that Acadian metamorphism was waning by 380 Ma in the vicinity of the Chester dome (Laird et al., 1984; Karabinos and Laird, 1988; Spear and Harrison, 1989). This agrees remarkably well with two studies of the age of garnet growth. Christensen et al. (1989) used the radial variation of $^{87}\text{Sr}/^{86}\text{Sr}$ to estimate that garnet porphyroblasts from Townsend, Vermont, grew at about 380 Ma over an average interval of approximately ten million years. Vance and Holland (1993) used Sm-Nd and U-Pb measurements and chemical zoning to argue that garnet from Gassetts, Vermont, (Fig. 2A) grew at about 380 Ma during increasing temperature and decompression of 2.5 kbar, corresponding to exhumation of approximately 7 km. Based on U-Pb dating of granitic intrusions and cross-cutting relationships, Ratcliffe et al. (2001) concluded that Acadian deformation in the vicinity of the Chester dome began before 392 Ma and that it persisted with uneven distribution in southeastern Vermont for another thirty million years. To the south, along strike in western Massachusetts, the end of intense Acadian deformation is tightly bracketed by a 376 ± 4 Ma age (U-Pb zircon, TIMS) of a highly deformed tonalitic sill from the Granville dome (Karabinos and Tucker, 1992) and a 373 ± 3 Ma age ($^{207}\text{Pb}/^{206}\text{Pb}$ zircon, evaporation) for the post-kinematic Williamsburg Granodiorite (Karabinos and Williamson, 1994).

THE CHESTER DOME

Together the Chester (Thompson, 1950) and Athens (Rosenfeld, 1954) domes form an elongated basement-cored structure approximately twelve km wide and thirty km long (Fig. 2). For simplicity, the entire structure is here called the Chester dome. Since the original work by Thompson and Rosenfeld, this classic mantled gneiss dome has been the focus of numerous structural (Rosenfeld, 1968; Nisbet, 1976; Bell and Johnson, 1989; Ratcliffe et al., 1997; Hickey and Bell, 2001) and metamorphic studies (Rosenfeld, 1968; Thompson et al., 1977; Cook and Karabinos, 1988; Christensen et al., 1989; Chamberlain and Conrad, 1993; Vance and Holland, 1993).

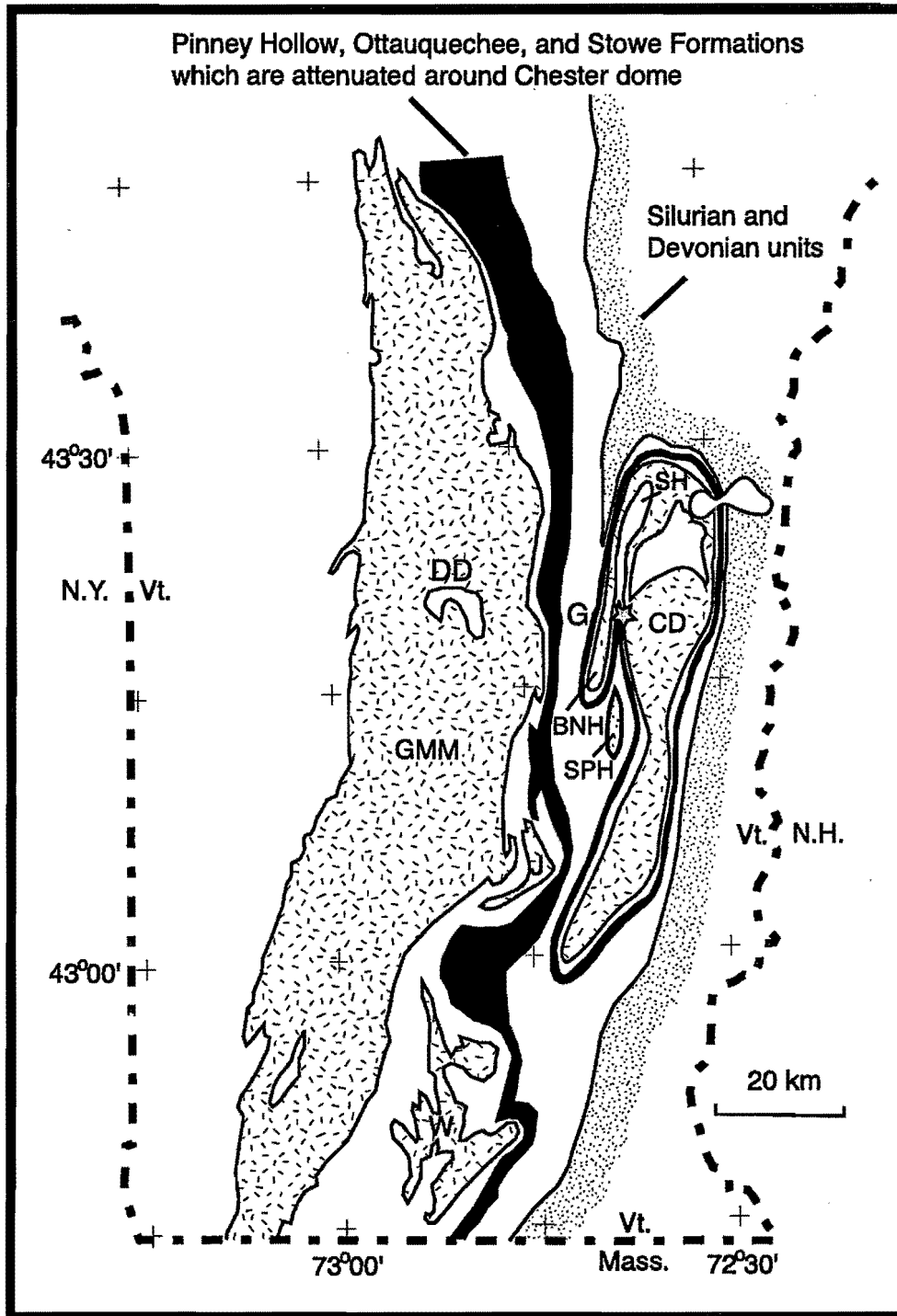


Figure 2A. Simplified map showing the distribution of the Pinney Hollow, Ottauquechee, and Stowe Formations (black), which are extremely thin around the Chester dome (CD). Grenvillian basement- hatched pattern, Silurian and Devonian units- dotted pattern. DD- Devils Den, G- location of Gassetts road cut (star), GMM- Green Mountain massif, J- Jamaica anticline, W- Wilmington dome. BNH- Butternut Hill fold, SH- Star Hill fold, SPH- Spring Hill fold. Based on Doll et al. (1961).

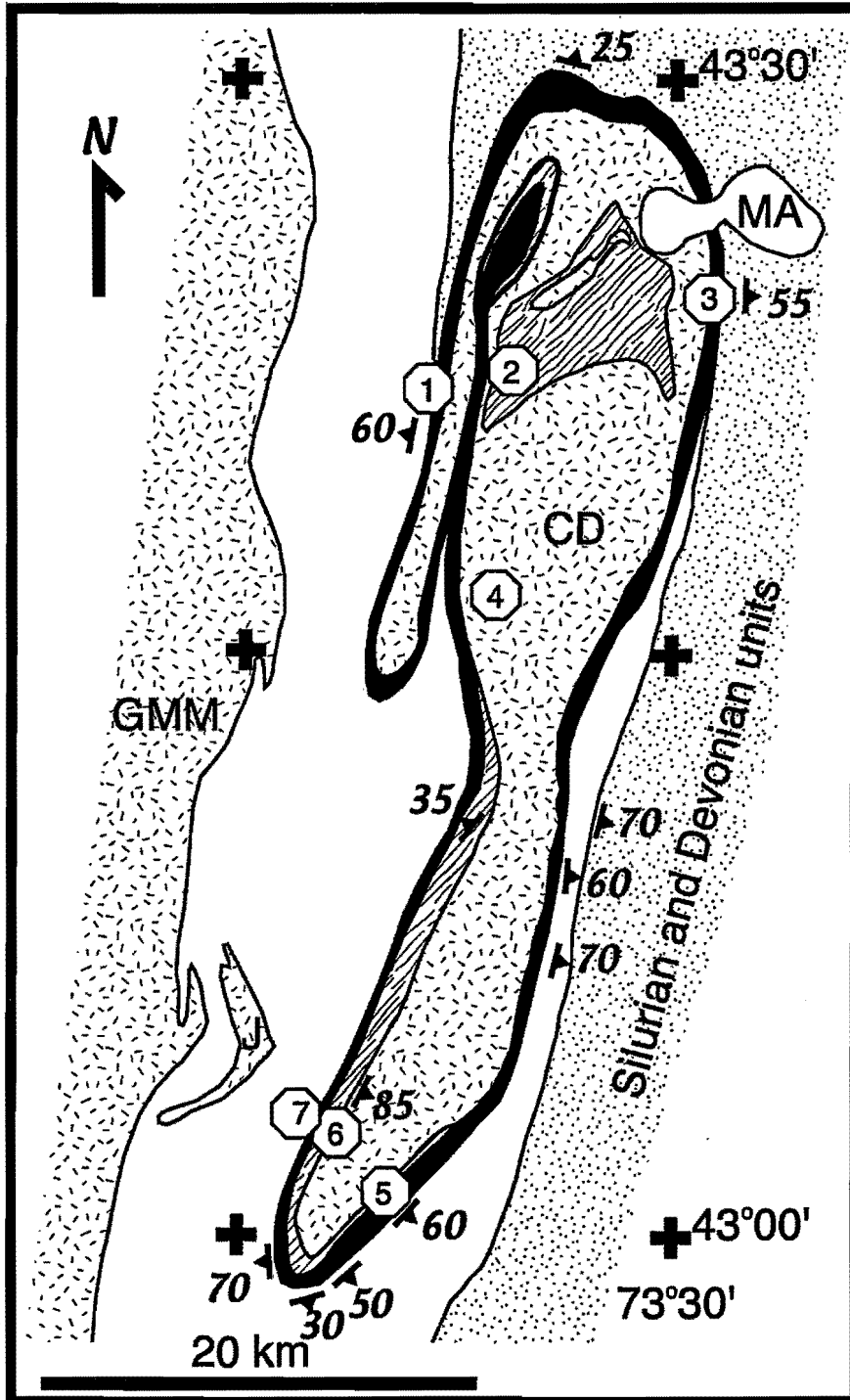


Figure 2B. Map of the Chester dome (CD) showing the distribution of the mylonite zone (black) and the location of field trip stops. Grenvillian basement-hatchured pattern. Hoosac Formation, including Cavendish Formation of Doll et al. (1961)- diagonal wavy lines. GMM- Green Mountain massif. J- Jamaica anticline. MA- Mount Ascutney. Strike and dip symbols show the orientation of the mylonitic fabric.

Most workers informally abandoned the term "Cavendish Formation" because its metasedimentary members were reassigned to other formations and its metaigneous member was reinterpreted as a post-Grenvillian intrusive suite stratigraphically unrelated to the metasedimentary units (Karabinos and Aleinikoff, 1990). However, in a major departure from earlier interpretations, Ratcliffe et al. (1996, 1997) revived the name Cavendish Formation and assigned its metasedimentary units to the Mount Holly Complex. This new interpretation, if correct, would require a dramatic change in structural reconstructions of the Green Mountain massif and Chester dome (e.g., Ratcliffe, 2000a, b).

To test this new age assignment, Karabinos et al. (1999) separated detrital zircons from a quartz-rich bed from Cavendish gorge, the type locality of what Richardson (1929) called the Cavendish Schist. This is also the location where Ratcliffe et al. (1996, 1997) obtained a 1.42 ± 0.02 Ga age on a tonalite, the Felchville Gneiss, that they interpreted as cutting the Cavendish Formation. It is important to note, however, that the interpretation of an intrusive contact between the Felchville Gneiss and the Cavendish Formation was based on map-scale patterns rather than direct field observations (Ratcliffe et al., 1997). There are no xenoliths of Cavendish Formation in the tonalite, nor are there apophyses of tonalite in the Cavendish Formation. The contact between the 1.42 Ga tonalite and the Cavendish Formation, where best exposed in Cavendish gorge (Stop 2), is highly sheared, hence a more plausible explanation for the truncation of the metasedimentary units is a fault rather than an intrusive contact.

The zircon grains analysed by Karabinos et al. (1999) varied from nearly euhedral to nearly spherical. Virtually all of the grains had pitted surfaces and showed some rounding of edges and terminations. The grains exhibited oscillatory zoning typical of zircons that crystallized from a magma. This is important because it precludes the possibility that metamorphic overgrowths were inadvertently analysed. Karabinos et al. (1999) analyzed ten zircon grains by the Pb evaporation method and fifteen grains by the sensitive high resolution ion microprobe (SHRIMP). All twenty-five grains yielded ages less than 1.42 Ga. Seven of the grains gave ages consistent with derivation from the Bull Hill Gneiss, which postdates the Grenville orogenic cycle. The ages of eight grains fall in the interval of 1.0 to 1.1 Ga and four in the interval of 1.1 to 1.2 Ga; these are very common igneous ages in the Grenville terrane of Canada and the Adirondacks. Three grains yielded ages of approximately 1.3 Ga, consistent with derivation from trondhjemitic gneisses of the Mount Holly complex (Ratcliffe et al., 1991). There is no reason to suspect that this wide range of single grain ages reflects multiple episodes of metamorphic growth of zircon or complicated Pb-loss events, as suggested by Ratcliffe (2000a). On the basis of these zircon ages, the Cavendish Formation should not be assigned to the Mount Holly Complex. In spite of these age constraints, however, Ratcliffe (2000a, b) did include the Cavendish Formation in the basement sequence. Obviously, the correct age assignment of these rocks is crucial for understanding the structural geometry of the northern part of the Chester dome.

Metamorphic Isograds around the Chester Dome

It is important to understand the timing and complex nature of metamorphism around the Chester dome because if extension did occur, there should be a record of contrasting pressure-temperature paths in footwall and hanging-wall rocks. If such a record exists, it would provide strong evidence for extension, constrain the location of the normal shear zone, and help date the extension.

Rosenfeld (1968) was the first to recognize that truncated inclusion trails in garnet porphyroblasts record two separate periods of garnet growth. He suggested that the first growth episode occurred during Taconic metamorphism and that the second episode occurred during Acadian metamorphism. Karabinos (1984) showed that garnets with textural unconformities also preserve reversals in chemical zoning that developed during a period of partial resorption of the garnet cores before the rims grew (Figs. 4A&B). Laird and Lanphere (1981) and Laird et al. (1984) documented polymetamorphic textures, zoning, and isograds in mafic schist from Vermont that are largely consistent with the polymetamorphic history inferred from pelitic rocks. Laird et al. (1984) used $^{40}\text{Ar}/^{39}\text{Ar}$ cooling ages to show that Taconic metamorphism affected mafic schist in northern Vermont. To date, however, no unequivocal evidence for Taconic metamorphism in the Chester dome has been published, although J. Cheney and F. Spear have unpublished ion-microprobe monazite ages that are consistent with Ordovician metamorphism (J. Cheney, personal communications, 2002).

Cook and Karabinos (1988) used inclusions in garnet porphyroblasts that contain textural unconformities to construct two sets of isograds in southeastern Vermont (Figs. 4C&D). The 'older' set of isograds is based on inclusions found in garnet cores. The 'younger' set is based on inclusions in the garnet rims and the matrix assemblage. The age of the younger metamorphism and garnet rims is clearly Acadian. The garnet cores, however,

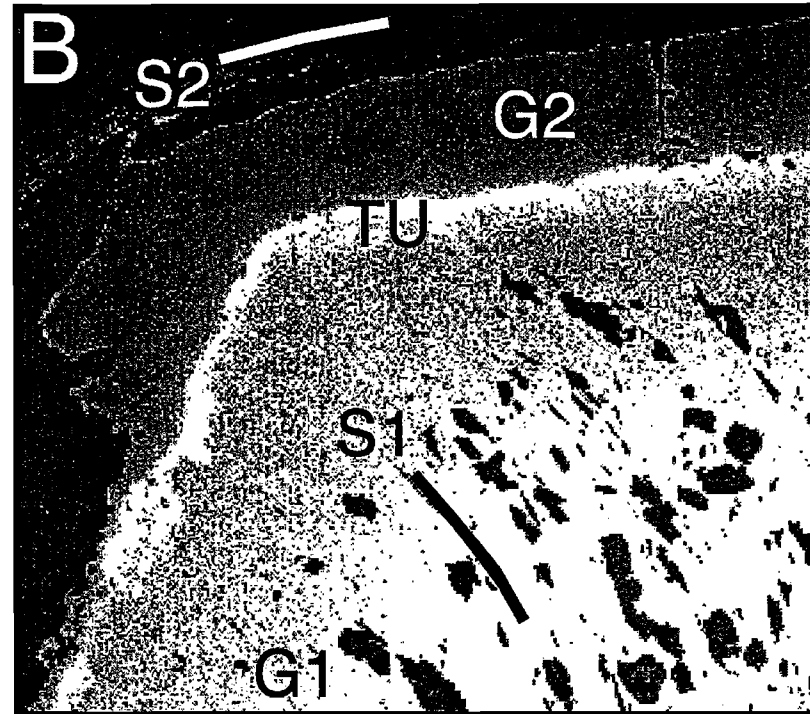
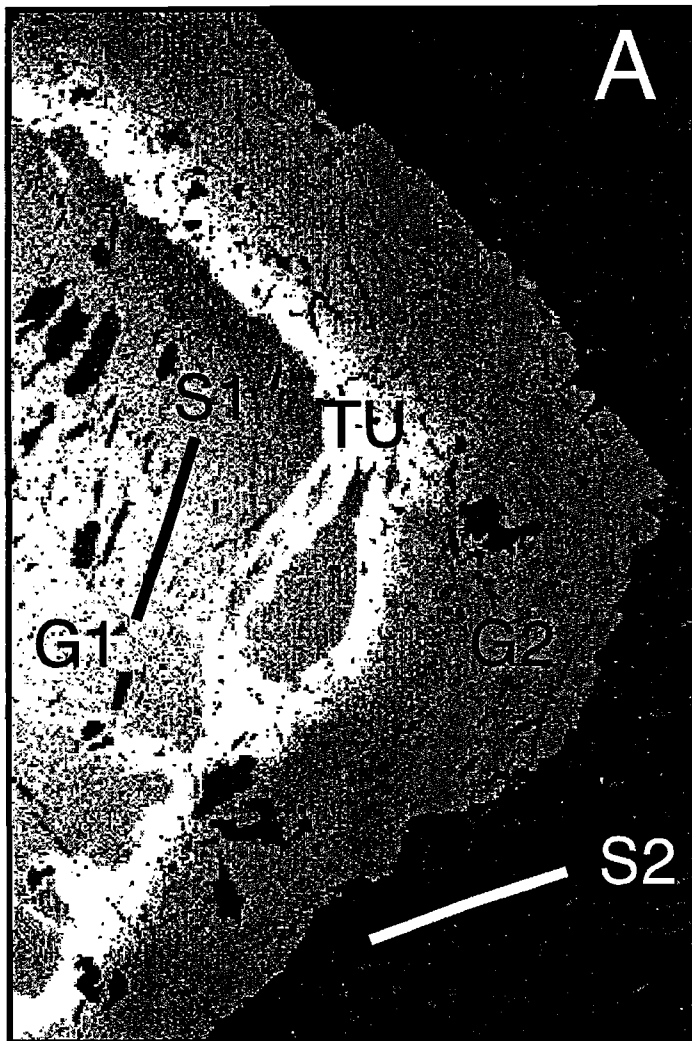


Figure 4. Mn X-ray maps of garnet porphyroblasts. First-stage garnet (G1) overgrew early schistosity (S1) and shows normal growth zoning with decreasing Mn content (light to dark shades of gray). Second-stage garnet (G2) overgrew crenulation cleavage (S2) parallel to matrix fabric (not visible in maps). The bright boundary between the two growth stages corresponds to the high Mn zoning anomaly caused by the partial resorption of first-stage garnet. The textural unconformity (TU) is located along the outer margin of the zoning anomaly. Rutile is abundant as inclusions in first-stage garnet, but absent elsewhere. A. Sample 120D (see Fig. 4C for location). Image is 2.6 by 3.9 mm. B. Sample 2739 (see Fig. 4C for location). Image is 3 by 2.7 mm.

It is important to note that we do not really know the stratigraphic thickness of any of the units in the eastern Vermont sequence because of structural complications. Furthermore, we do not have very good age constraints on these units. A notable exception is a recent 571 ± 5 Ma U-Pb zircon age on a metafelsite from the Pinney Hollow Formation near the north end of the Green Mountain massif (Walsh and Aleinikoff, 1999). This constrains the Tyson, Hoosac, and Pinney Hollow Formations to be Late Proterozoic, if the stratigraphic continuity of these units is accepted. Another age constraint is that the Moretown Member of the Missisquoi Formation must be older than the 479 ± 8 Ma Hallockville Pond Gneiss, which cross-cuts the Moretown in western Massachusetts (Karabinos and Williamson, 1994). Because the units in the eastern Vermont sequence formed in disparate tectonic settings and the boundaries between the units are commonly interpreted as thrust faults (e.g. Rowley and Kidd, 1981; Stanley and Ratcliffe, 1985; Ratcliffe et al., 1997), the relative ages of the units must also be considered uncertain. Despite these limitations, it seems reasonable, as a first-order approximation, to compare the thickness and stacking order of the units on the east flank of the Green Mountain massif with the mantling sequence around the Chester dome.

Figure 5 shows schematically which units are affected by ductile thinning and omission in the mylonite zone around the Chester dome. Unpatterned portions of the "column" represent units that are either extremely thinned in the mylonite zone or absent. The thinning and omission of units is most extreme along the northern and northeastern margin of the dome. The structural section is somewhat less disrupted along the southern and southwestern margin of the dome. These observations are consistent with recent mapping by Ratcliffe (2000a, 2000b), who showed subdivisions of the Moretown Formation directly on the Mount Holly Complex along the northern and eastern margin of the Chester dome, but interpreted the contact as a thrust fault.

In my opinion, extension along a normal-sense shear zone is a more logical explanation for the observations than thrusting. Ductile thinning can occur along thrust faults, but it usually affects rocks on the overturned limbs of thrust nappes. There is no evidence for overturned limbs or structural repetition around the Chester dome. Conceivably, there might be some explanation for the thinning and omission of units that invokes tectonic erosion during Taconic subduction. However, any explanation, whether structural or stratigraphic in nature, must take into account the observation that the zone of attenuated and missing units is spatially correlated with a strongly developed mylonitic fabric and that this fabric must be an Acadian feature.

Kinematic Indicators

Figure 6 shows the sense of shear determined from sparse kinematic indicators found in outcrop, slabbed hand samples, and thin sections. Indicators include c-s fabrics, rotated porphyroclasts, and, most commonly, asymmetric extensional shear bands. The rotation sense inferred from spiral inclusion trails in garnet porphyroblasts is consistent with the kinematic indicators noted above, but this information is not included in the data summarized in Figure 6. To date, I have not found very many unambiguous kinematic indicators in the mylonite zone surrounding the Chester dome. (The numbers next to the large arrows in Figure 6 show how many independent indicators are available at each locality.) One explanation for the scarcity of kinematic indicators is overprinting of the mylonitic fabric during the doming episode of deformation. If the mylonite zone did develop as a normal-sense shear zone, it must have been nearly planar and close to horizontal during extension. Currently it is folded, along with the basement-cover contact, into the elongated Chester dome. The doming event did not produce a strong axial planar fabric but limb rotation and horizontal shortening accompanying doming could have obscured kinematic indicators produced during extension.

Based on the available observations, the hanging-wall rocks above the mylonite zone appear to have been displaced generally westward relative to footwall rocks in the core of the dome. It is not clear, however, from the indicators alone whether the displacement was northwest, west, or southwest. Two observations suggest that the displacement was southwest. First, Rosenfeld (1968) used deformed pebbles and phenocrysts to document strong northeast to southwest Acadian extension. Second, the mantling sequence is most strongly thinned and truncated along the north and northeast margin of the dome and less disrupted along the south and southwest margin, consistent with northeast to southwest displacement (Fig. 5).

Working Model

It seems reasonable to assume that the area of the Chester dome was affected by the Taconic orogeny, but, in my opinion, it is difficult to identify specific features that record Taconic deformation and metamorphism. One candidate is the large exposure of Cavendish Formation in the north-central part of the Chester dome (Doll et al.,

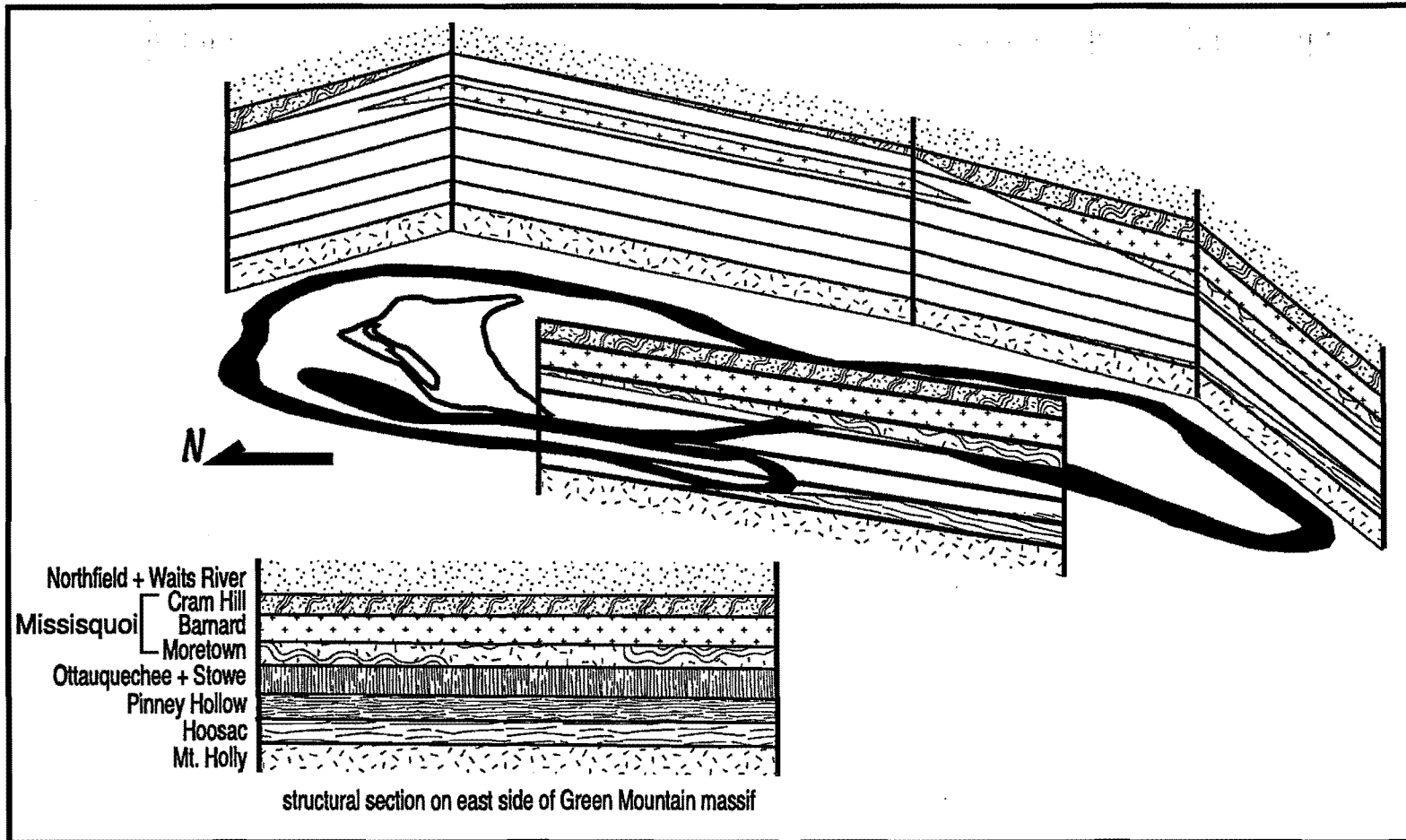


Figure 5. Schematic fence diagram showing the structural sequence (in foreground) of units on the east side of the Green Mountain massif and the distribution of the same units around the Chester dome. The Chester dome is shown in a perspective view from the west. Blank areas in the fence diagram correspond to units that are missing in traverses around the dome. The locations of the traverses are shown approximately by the bottom of each post in the fence.

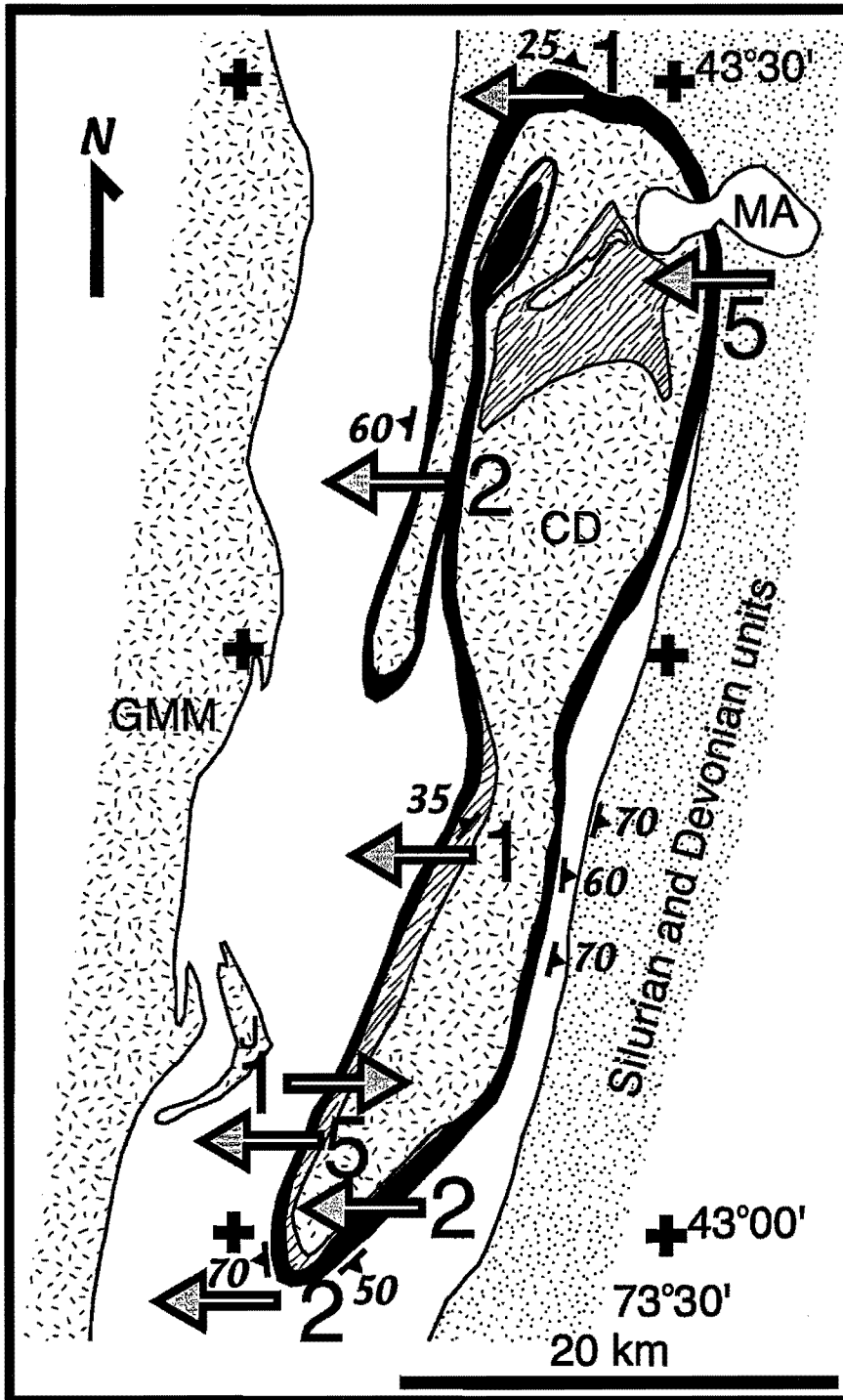


Figure 6. Map of the Chester dome (CD) showing the sense of shear determined from kinematic indicators (arrows) and the number of observations at each locality. The hanging-wall rocks above the mylonite zone (shown in black) appear to have moved west relative to the footwall rocks. The normal-sense shear zone was later folded during the doming episode of deformation.

1961). This exposure of cover rocks appears to be preserved in the footwall of a Taconic thrust beneath Grenvillian basement. Analogous fault geometries are present near the Devils Den, Jamaica anticline, and Wilmington dome (Figs. 2A, 4). The important point is that the dominant fabrics and structures in the Chester dome are Acadian features.

Early Acadian deformation must have involved the development of a thick tectonic cover according to pressure estimates of 8 to 11 kbar during Acadian metamorphism in the Chester dome (Kohn and Spear, 1990; Vance and Holland, 1993; Kohn and Valley, 1994). This tectonic burial logically corresponds to the nappe phase of deformation. The nappes in eastern Vermont involve Silurian and Devonian units deposited in the Connecticut Valley trough. The Connecticut Valley trough probably formed as a back-arc basin between the Shelburne Falls and Bronson Hill arcs (Karabinos et al., 1998). During Acadian deformation the sedimentary rocks in the trough were recumbently folded into west-verging nappes that were transported westward over the area of the Chester dome.

Extension followed the nappe phase of deformation; I infer this from the pressure decrease recorded by the inclusion patterns in garnet porphyroblasts with textural unconformities. Rutile inclusions are ubiquitous in first-stage garnet cores but absent in second-stage garnet rims and matrix, whereas ilmenite is abundant in the second-stage rims and matrix, and this distribution of inclusions is consistent with decreasing pressure (Bohlen et al., 1983). A pressure decrease during garnet growth in the Gassetts schist was also determined by Vance and Holland (1993). Tectonic exhumation of rocks in the core of the Chester dome occurred during ductile thinning and omission of units in the mantling sequence around the Chester dome (Fig. 5). It seems likely that the mylonite zone surrounding the Chester dome formed as a normal-sense shear zone, and that at the time of its formation it was approximately planar and horizontal. If exhumation led to decompression melting within the dome, then the 390 Ma age of Acadian granitic dikes (Ratcliffe et al, 2001) may constrain the time of extension. Extension may reflect gravitational collapse following crustal thickening or transtensional strike-slip faulting parallel to the Acadian orogen. It seems likely that other domes in western New England, such as the Strafford, Pomfret, Guilford, Shelburne Falls, Goshen, and Granville domes, are also related to extension.

The initial doming of the Chester dome may have occurred during extension, perhaps as a core complex, but its present geometry must reflect renewed crustal shortening and folding after development of the mylonitic fabric. The mylonite zone dips moderately to steeply away from the core of the dome, and is slightly overturned along the southwest margin (Fig. 2B). It is difficult to imagine a mechanism that could have formed the mylonitic fabric in its present geometry. Finally, I would interpret the Butternut Hill, Star Hill, and Spring Hill folds (Fig. 2A) on the northwest side of the Chester dome as relatively low-amplitude folds related to the late compression that folded the mylonite zone and created the final dome geometry.

ACKNOWLEDGEMENTS

Twenty-five years ago, Jim Thompson and John Rosenfeld introduced me to the geology of southeastern Vermont. Since then I have benefitted from numerous discussions with them, and their generous advice has been invaluable in my research. Their pioneering and innovative studies set the stage for five decades of fruitful research by many geologists in the region.

Matt Student worked with me in the field during the summer of 2001. David Morris and Elizabeth Mygatt helped me with the road log and, together with Margaret MacEachern, made helpful suggestions for improving the manuscript.

Financial support for this work was provided by the Petroleum Research Fund administered by the American Chemical Society.

ROAD LOG

Mileage

- 0.0 **MEET AT 8:00 AM IN THE CENTER OF PROCTORSVILLE** at the intersection of Route 131 and Depot St. near the Crows Corner Bakery Café. Drive S on Depot St.
- 0.5 Intersection of Route 103 and Depot St., turn left, S, on Route 103.
- 2.0 Park in pullout on right, W, side of road.

STOP 1. BASEMENT-COVER CONTACT, NW MARGIN OF CHESTER DOME. (45 min.) Gneiss on E side of road, opposite pullout, belongs to the Middle Proterozoic Mount Holly Complex (i.e. basement) and is composed of quartz, plagioclase, biotite, epidote, \pm muscovite, \pm microcline. It contains abundant highly-deformed pegmatites that distinguish it from plagioclase schist and gneiss of the Late Proterozoic Hoosac Formation. Walk N along road. The first outcrop on the W side of the road belongs to the cover sequence. Before looking at it, head into the woods on the E side of the road to see more of the Mount Holly complex. The contact appears to be buried in the small drainage on the E side of the road. The basement gneisses are highly sheared and the mylonitic fabric dips steeply to the W. Outcrops up the hill contain large-scale C-S fabric and rotated boudins that indicate a tops-to-the-west sense of shear.

The first outcrop on the W side of the road is quartz, muscovite, biotite, chlorite, \pm plagioclase, \pm garnet schist. Many layers contain graphite. Further N are exposures of quartz-rich gneiss with a distinctive pinstripe texture. I think these rocks belong to the Cram Hill and Moretown Members of the Missisquoi Formation of Doll et al. (1961).

Reverse direction and drive N on Route 103.

- 2.6 Outcrop on E side of road of Barnard Gneiss.
- 3.5 Turn right, N, on Depot St.
- 4.0 Turn right, E, on Route 131.
- 6.1 Turn right on Power Plant Rd.
- 6.3 Park at gate.

STOP 2. CAVENDISH GORGE, AGE OF THE CAVENDISH FORMATIONS. (30 min.) Walk from gate up the dirt road to the power station. One of the tonalite samples dated by Ratcliffe et al. (1997) was collected from the outcrop next to the power station. Ratcliffe et al. (1997) argued that the 1.4 Ga tonalite intruded the metasedimentary units of the Cavendish Formation here in the gorge, the type locality of the Cavendish Schist of Richardson (1929), making them older than the tonalite and part of the Mount Holly Complex. I think that the contact between the tonalite and the marble, calc-silicate, quartzite, and schist is tectonic in origin. I collected a sample of quartzite from the gorge about 50 m upstream from the power station and separated detrital zircons. Single grain Pb-evaporation and SHRIMP ages of 25 grains are all younger than 1.4 Ga (Karabinos et al., 1999), consistent with a tectonic contact between the tonalite and the metasedimentary rocks, but inconsistent with the intrusive contact interpretation. Furthermore, the plagioclase schist here in the gorge does not contain abundant highly-deformed pegmatite like the gneiss we saw in the basement at Stop 1. I correlate the plagioclase-rich schist with the Hoosac Formation and the marble, calc-silicate, and quartzite with the Tyson Formation.

Turn around and drive back to Route 131.

- 6.5 Turn right, E, on Route 131.
- 12.9 Intersection of Rts. 131 and 106. Continue on Route 131.
- 14.2 Turn right on Gulf Rd.
- 14.5 Intersection of Gulf Rd and Plains Rd. Continue straight.
- 15.4 Park in pullout on left side of road.

STOP 3. BASEMENT-COVER CONTACT, NE MARGIN OF CHESTER DOME. (45 min.) Outcrop immediately E of pullout is quartz-rich, biotite, chlorite, \pm plagioclase schist with graphite in some layers. Farther E are more outcrops of this lithology and some layers contain highly fractured garnet crystals partially altered to chlorite along the cracks. These rocks are part of the Silurian to Devonian sequence, probably the Northfield or Waits River Formation. As we will see, the intense zone of shearing along the northeastern margin of the Chester dome extends all the way from Middle Proterozoic basement through the pre-Taconic cover sequence and into the Silurian units.

Walk back down the road to the W. Outcrop beneath roots of fallen tree on S side of road is similar to the first outcrop and contains a fine-grained, unmetamorphosed mafic dike, probably related to Mount Ascutney, a Cretaceous intrusion. Outcrop along road is spotty but it is much better in the woods on both sides of the road. Below the schist of the Northfield Formation are highly deformed felsic and mafic gneisses that contain a mylonitic fabric. It is difficult to assign these rocks to a specific unit with certainty, because they are highly deformed and out

of context, but they look more like Barnard Gneiss to me than anything else. This is the only rock type belonging to the Late Proterozoic to Ordovician sequence that I have found along this traverse.

Only 0.3 mile W of the pullout is an outcrop of highly sheared augen gneiss. This rock was mapped as Bull Hill Gneiss by Doll et al. (1961) but not all layers contain microcline, which is typical of Bull Hill Gneiss. In thin section it is clear that the eyes in some layers are composed of plagioclase aggregates. Doll et al. (1961) showed Bull Hill Gneiss directly below Hoosac Formation around much of the Chester dome. It is common to find Bull Hill Gneiss at the basement-cover contact in the southern part of the dome, but other feldspar-rich gneisses belonging to the Mount Holly Complex are more typically found at the contact in the northern part of the dome.

- 15.6 Intersection of Gulf Rd. and Gravelin Rd. Outcrop on corner contains unmetamorphosed dike. Turn left, N, on Gravelin Rd.
- 16.0 Turn left, W, on Route 131.
- 19.4 Turn left, S, on Route 106.
- 24.1 Turn right, W, on Route 10.
- 28.4 Turn left, S, on Route 103.
- 28.9 Park in pulloff on right.

STOP 4. GNEISSES IN MOUNT HOLLY COMPLEX WITH ACADIAN DIKES. (20 min.) The tonalitic gneiss seen here is a common lithology in the Mount Holly Complex of the Chester dome. Also, the deformation fabric in this outcrop is typical of that found in the Mount Holly Complex rocks within the core of the dome, away from the basement-cover contact. Late cross-cutting felsic dikes, like those seen here, are found in many outcrops in the dome below the mylonite zone. Ratcliffe et al. (2001) reported a zircon SHRIMP age from a granitic dike near Gassetts of 392 ± 6 Ma.

Continue S on Route 103.

- 32.9 Bear right on Route 11 S to connect with Route 35 S.
- 33.1 Go straight across main highway to take Route 35 S.
- 40.1 In village of Grafton turn right.
- 40.3 Turn left, S, on Townshend Rd.

The narrow valley that the road follows S of Grafton parallels the W flank of the dome near the contact between the Hoosac Formation and the Bull Hill Augen Gneiss.

- 46.8 Bear right. Back on Route 35 S.
- 50.1 Townshend. Turn left on Route 30 S.
- 51.7 Turn left on Ellen Ware Rd.
- 51.8 Park in pullover on left.

STOP 5. BASEMENT-COVER CONTACT, SE MARGIN OF CHESTER DOME. (45 min.) Walk back about 20 m to W to first outcrop; look for signs of blasting dating from construction of the old railway bed parallel to the West River. Rock is quartz, microcline, plagioclase, biotite, epidote gneiss belonging to the Mount Holly Complex. This does not look like typical Bull Hill Gneiss to me, although that is what is shown below the Hoosac Formation by Doll et al. (1961). Walk E along road past pullout. There are some outcrops of plagioclase schist that look like Hoosac Formation. Continue E along road to where the river is just S of the road. River outcrop of mafic schist with some pelitic schist layers. The pelitic schist contains some large garnet crystals that were incompletely altered to chlorite. The extent of retrogression increases significantly to the E along this traverse. This outcrop and others further E contain cleavage surfaces with sprays of biotite after amphibole. There are some outcrops along the road to the E of quartz-rich schist with distinctive pinstripe texture. I would assign the mafic and pelitic schist found in the river outcrops to the Moretown Formation. I see no rocks here that I would assign to the Pinney Hollow, Ottauquechee, or Stowe Formations.

Reverse direction and head back to Route 30.

51.9 Turn right, N, on Route 30.

53.5 Back in the center of Townshend, stay on Route 30.

55.1 Covered bridge on left, outcrop of quartz-rich gneisses on right. These rocks could belong to the lower part of the cover sequence (Rosenfeld, 1988) or to the basement. Approximately 0.3 mi. back to the southeast, near the sharp bend in the road, is sheared Bull Hill augen gneiss on the north side of Route 30. The Bull Hill Gneiss intruded the Mount Holly Complex at approximately 960 Ma (Karabinos and Aleinikoff, 1990), after the Grenville orogeny. Therefore, the deformation fabric in this unit is from the Taconic and Acadian orogenies.

55.2 Park in pullover on left without blocking gate.

STOP 6. TOWNSHEND DAM SPILLWAY, MYLONITE ZONE, SW MARGIN OF CHESTER DOME. (30 min.) Walk around gate and down dirt road past the equipment sheds for Townshend Dam. Just before the road crosses a small and unappealing stream, walk through the reeds to the large outcrop to your right. Here is highly sheared plagioclase schist and gneiss of the Hoosac Formation. Some dark biotite-rich layers are present. Note the extreme isoclinal folds and boudinage in this outcrop.

If it is not too wet, it is possible to walk up the spillway and see rocks on both sides of the cut. Another approach is to walk back to the road, continue across the bridge about 100 m, and head into the pine trees on the right. Look for the end of the chain link fence and then walk around and past it to the N, toward the edge of the spillway using **extreme caution** - there are some steep cliffs with a lot of vertical relief. From the top of the spillway it is possible to look to the other side and appreciate the extreme deformation of these rocks. There are abundant folds, boudinage, and truncated layers. The rocks on this side of the spillway are made up of interlayered mafic and pelitic schist, with sprays of biotite after amphibole, typical of the Moretown Formation. Between the rocks of the Hoosac Formation just seen and the Moretown Formation, there are some layers of garnet-rich pelitic schist that could be part of the Pinney Hollow Formation. They contain quartz, plagioclase, muscovite, biotite, chlorite, and garnet up to 3 cm in diameter. Some of the garnets have quartz inclusion trails that indicate a counter-clockwise sense of rotation when viewed to the N. This is consistent with other kinematic indicators that show tops to the W. An interesting feature of this section is that the degree of retrogressive alteration of garnet to chlorite is highly variable. Furthermore, some layers contain graphite, usually as inclusions in plagioclase and garnet. I believe that the graphite was precipitated from infiltrating fluids during metamorphism and that the variable retrogression reflects irregular fluid flow, probably during the normal-sense shearing that preceded the doming phase of deformation.

This is the location of garnet dated by Christensen et al. (1989) using $^{87}\text{Sr}/^{66}\text{Sr}$ variations; they found that the garnet grew at approximately 380 Ma over a 10 m.y. interval. Thompson et al. (1993) assigned rocks in the spillway to the Pinney Hollow and Ottauquechee Formations. If this assignment is correct, these units are very thin compared to their outcrop widths on the E flank of the Green Mountain massif.

Continue N on Route 30.

55.5 Turn left in parking area of Townshend Dam.

STOP 7. TOWNSHEND DAM ROADCUT, MORE OF THE MYLONITE ZONE, SW MARGIN OF CHESTER DOME. (30 min.) Please be very careful looking at this roadcut. It is a dangerous curve and cars drive by very fast. Stay off the pavement!

The most prominent feature of this long roadcut is the strong mylonitic fabric parallel to the compositional layering. There are abundant folds, boudinage, and rotated garnets. However, what impresses me is the extent of disrupted layering throughout the outcrop. The pelitic layers contain quartz, plagioclase, muscovite, biotite, chlorite, and garnet. The mafic layers contain quartz, plagioclase, hornblende, muscovite, biotite, garnet, and epidote.

Rosenfeld et al. (1988) called these rocks Ottauquechee Formation. I would prefer to assign them to the Moretown Formation. The rocks on the W side of the roadcut show the distinctive pinstripe texture of the Moretown Formation. Rocks in the middle and eastern end of the roadcut are admittedly more difficult to assign, but look like Moretown Formation to me based on their lithology. Whatever units these intermediate rocks belong to, there is not much distance between rocks belonging to the Hoosac Formation to the E and rocks that are clearly part of the Moretown Formation to the W. Compared with the typical sequence seen on the E flank of the Green Mountain massif, only several kilometers to the W, the section between the Hoosac and Moretown Formations here is highly

attenuated. Outcrops W of here along Route 30 are mapped as Moretown Formation and show the distinctive pinstripe texture. They do not, however, have the strong mylonitic fabric seen in this roadcut.

END OF TRIP.

REFERENCES CITED

- Bell, T.H., and Johnson, S.E., 1989, Porphyroblast inclusion trails; the key to orogenesis: *Journal of Metamorphic Geology*, v. 7, p. 279-310.
- Bohlen, S.R., Wall, V.J., and Boettcher, A.L., 1983, Experimental investigations and geological applications of equilibria in the system FeO-TiO₂-Al₂O₃-SiO₂-H₂O: *American Mineralogist*, v. 68, p. 1049-1058.
- Bradley, D.C., 1983, Tectonics of the Acadian Orogeny in New England and adjacent Canada: *Journal of Geology*, v. 91, p. 381-400.
- Bradley, D.C., Tucker, R.D., Lux, D.R., Harris, A.G., and McGregor, D.C., 2000, Migration of the Acadian Orogen and foreland basin across the Northern Appalachians of Maine and adjacent areas, U. S. G. S. Professional Paper 1624, 55 p.
- Castonguay, S., Ruffet, G., Tremblay, A., and Feraud, G., 2001, Tectonometamorphic evolution of the southern Quebec Appalachians; (super 40) Ar/ (super 39) Ar evidence for Middle Ordovician crustal thickening and Silurian-Early Devonian exhumation of the internal Humber Zone: *Geological Society of America Bulletin*, v. 113, p. 144-160.
- Chamberlain, C. P., and Conrad, M. E., 1993, Oxygen-isotope zoning in garnet; a record of volatile transport: *Geochimica et Cosmochimica Acta*, v. 57, p. 2613-2629.
- Coney, P.J., 1979, Tertiary evolution of Cordilleran metamorphic core complexes, in Armentrout, M ; Cole, R ; TerBest, and H, Jr., eds., *Cenozoic paleogeography of the western United States, Volume 3: Pacific Coast Paleogeography Symposium: Los Angeles, CA, United States, Pacific Section, Society of Economic Paleontologists and Mineralogists*, p. 14-28.
- Cook, S.M., and Karabinos, P., 1988, Polymetamorphic isograds from southeastern Vermont: *Geological Society of America Abstracts with Programs*, v. 20, p. 13.
- Christensen, J.N., Rosenfeld, J.L., and DePaolo, D.J., 1989, Rates of tectonometamorphic processes from rubidium and strontium isotopes in garnet: *Science*, v. 244, p. 1465-1469.
- Doll, C.G., Cady, W.M., Thompson, J.B., Jr., and Billings, M.P., 1961, Centennial geologic map of Vermont, Vermont Geological Survey.
- Getty, S.R., and Gromet, L.P., 1992, Evidence for extension at the Willimantic Dome, Connecticut; implications for the late Paleozoic tectonic evolution of the New England Appalachians: *American Journal of Science*, v. 292, p. 398-420.
- Goldstein, A.G., 1989, Tectonic significance of multiple motions on terrane-bounding faults in the Northern Appalachians: *Geological Society of America Bulletin*, v. 101, p. 927-938.
- Hepburn, J.C., Trask, N.J., Rosenfeld, J.L., and Thompson, J.B.J., 1984, Bedrock geology of the Brattleboro quadrangle, Vermont-New Hampshire: *Vermont Geological Survey Bulletin*, v. no. 32, p. 162 p.
- Hickey, K.A., and Bell, T.H., 2001, Resolving complexities associated with the timing of macroscopic folds in multiply deformed terrains; the Spring Hill Synform, Vermont: *Geological Society of America Bulletin*, v. 113, p. 1282-1298.
- Hodges, K.V., Parrish, R.R., Housh, T.B., Lux, D.R., Burchfiel, B.C., Royden, L.H., and Chen, Z., 1992, Simultaneous Miocene extension and shortening in the Himalayan Orogen: *Science*, v. 258, p. 1466-1470.
- Karabinos, Paul, 1984, Deformation and metamorphism on the east side of the Green Mountain massif in southern Vermont: *Geological Society of America Bulletin*, v. 95, p. 584-593.
- Karabinos, P, 1998, Tectonic and stratigraphic development of the Connecticut Valley Trough in the New England Appalachians: *Geological Society of America Abstracts with Programs*, v. 30, p. 191.
- Karabinos, P, 1999, Evidence for low-angle normal faulting in the Acadian Orogen: Is the Chester dome a core complex in Vermont?: *Geological Society of America, Abstracts with Programs*, v. 31, p. A-370.
- Karabinos, P, 2000, Tectonic Significance of Textural Unconformities in Garnet from the New England Appalachians: *Geological Society of America, Abstracts with Programs*, v. 32, p. A-31.
- Karabinos, Paul, and Aleinikoff, J. N., 1990, Evidence for a major Middle Proterozoic, post-Grenvillian igneous event in western New England: *American Journal of Science*, v. 290, p. 959-974.
- Karabinos, Paul, and Aleinikoff, J.N., 1991, Zircon U-Pb and Pb-Pb evaporation ages of Paleozoic metavolcanic rocks from eastern Vermont, *Geological Society of America, Abstracts with Programs*, 23, p. A310.

- Karabinos, Paul, Aleinikoff, J.N., and Fanning, C.M., 1999, Distinguishing Grenvillian basement from pre-Taconian cover rocks in the northern Appalachians, *American Journal of Science*, **299**, p. 502-515.
- Karabinos, P., and Laird, J., 1988, Structure and metamorphism from Jamaica to the Chester Dome, Vermont, in Bothner, W.A., ed., *New England Intercollegiate Geologic Conference, Guidebook for Fieldtrips*, p. 281-292.
- Karabinos, P., Samson, S.D., Hepburn, J.C., and Stoll, H.M., 1998, Taconian Orogeny in the New England Appalachians; collision between Laurentia and the Shelburne Falls Arc: *Geology*, v. 26, p. 215-218.
- Karabinos, P., and Thompson, J.B., Jr., 1997, Basement-cover relationships in southern Vermont, in Grover, T.W., Mango, H.N., and Hasenohr, E.J., eds., *New England Intercollegiate Geological Conference: Castleton, Vermont*, p. B3-1 to B3-20.
- Karabinos, Paul, and Tucker, R.D., 1992, The Shelburne Falls arc in western Massachusetts and Connecticut: The lost arc of the Taconian orogeny, *Geological Society of America, Abstracts with Programs*, **24**, p. A288-289.
- Karabinos, Paul, and Williamson, B. F., 1994, Constraints on the timing of Taconian and Acadian deformation in western Massachusetts: *Northeastern Geology*, v. 16, p. 1-8.
- Kohn, M.J., and Spear, F.S., 1990, Two new geobarometers for garnet amphibolites, with applications to southeastern Vermont: *American Mineralogist*, v. 75, p. 89-96.
- Kohn, M.J., and Valley, J.W., 1994, Oxygen isotope constraints on metamorphic fluid flow, Townshend Dam, Vermont, USA: *Geochimica et Cosmochimica Acta*, v. 58, p. 5551-5566.
- Laird, J., and Albee, A.L., 1981, Pressure, temperature, and time indicators in mafic schist; their application to reconstructing the polymetamorphic history of Vermont: *American Journal of Science*, v. 281, p. 127-175.
- Laird, J., Lanphere, M.A., and Albee, A.L., 1984, Distribution of Ordovician and Devonian metamorphism in mafic and pelitic schists from northern Vermont: *American Journal of Science*, v. 284, p. 376-413.
- Menard, T., and Spear, F.S., 1994, Metamorphic P-T paths from calcic pelitic schists from the Strafford Dome, Vermont, USA: *Journal of Metamorphic Geology*, v. 12, p. 811-826.
- Molnar, P., and Tapponnier, P., 1978, Active tectonics of Tibet: *Journal of Geophysical Research*, v. 83, p. 5361-5375.
- Nisbet, B.W., 1976, Structural studies in the northern Chester dome of east-central Vermont: Ph.D. thesis: State University of New York at Albany, Albany, N.Y., 265 p.
- Ratcliffe, N.M., 2000a, Bedrock geologic map of the Cavendish Quadrangle, Windsor County, Vermont, U. S. Geological Survey. Reston, VA, Map I-2598, 19 p. 1 sheet 1:24,000.
- Ratcliffe, N.M., 2000b, Bedrock geologic map of the Chester Quadrangle, Windsor County, Vt., U. S. Geological Survey. Reston, VA, Map GQ-1773, 16 p, 1 sheet 1:24,000.
- Ratcliffe, N.M., Aleinikoff, J.N., Armstrong, T.R., Walsh, G.J., and Hames, W.E., 2001, Intrusive relations and isotopic ages of Devonian granites in southern and central Vermont; evidence for a prolonged Acadian Orogeny and partitioning of compressional strain, in *Geological Society of America Abstracts with Programs*, v. 33 p. 81.
- Ratcliffe, N.M., Aleinikoff, J.N., Burton, W.C., and Karabinos, P., 1991, Trondhjemitic, 1.35-1.31 Ga gneisses of the Mount Holly Complex of Vermont: evidence for an Elzevirian event in the Grenville Basement of the United States Appalachians: *Canadian Journal of Earth Sciences*, v. 28, p. 77-93.
- Ratcliffe, N. M., Aleinikoff, J. N., and Hames, W. E., 1996, 1.4 Ga U-Pb zircon ages of metatrandhjemitite of the Chester Dome, VT, and probable Middle Proterozoic age of the Cavendish Formation: *Geological Society of America Abstracts with Programs*, v. 28, p. 93.
- Ratcliffe, N.M., Armstrong, T.R., and Aleinikoff, J.N., 1997, Stratigraphy, geochronology, and tectonic evolution of the basement and cover rocks of the Chester and Athens domes, in Grover, T.W., Mango, H.N., and Hasenohr, E.J., eds., *New England Intercollegiate Geological Conference: Castleton, Vermont*, p. B6 1- B6 55.
- Richardson, C. H., 1929, The geology and petrography of Reading, Cavendish, Baltimore, and Chester, Vermont: Vermont Geological Survey, Report of the State Geologist for 1928, 16th Annual Report, p. 208-248.
- Robinson, P., Tucker, R.D., Bradley, D., Berry, H.N., Osberg, P.H., 1998, Paleozoic orogenies in New England, USA: *GFF*, v. 120, p. 119-148.
- Rosenfeld, J.L., 1954, Geology of the southern part of the Chester dome, Vermont: Ph.D. thesis, Harvard University, Cambridge, Mass., 303 p.
- Rosenfeld, J.L., 1968, Garnet rotations due to the major Paleozoic deformations in southeast Vermont, Chap. 14: in *Studies of Appalachian geology, northern and marine*, Zen, E-an, et al., eds., New York, Interscience Publishers, p. 185-202.
- Rosenfeld, J.L., Christensen, J.N., and DePaolo, D.J., 1988, Snowball garnets revisited, southeastern Vermont, in Bothner, Wallace, ed., *New England intercollegiate geological conference 80th annual meeting; Guidebook*

- for field trips in southwestern New Hampshire, southeastern Vermont, and north-central Massachusetts., p. 223-240.
- Rowley, D.B., and Kidd, W.S.F., 1981, Stratigraphic relationships and detrital composition of the Medial Ordovician flysch of western New England: Implications for the tectonic evolution of the Taconic orogeny: *Journal of Geology*, v. 89, p. 199-218.
- Selverstone, J., 1985, Petrologic constraints on imbrication, metamorphism, and uplift in the SW Tauern Window, Eastern Alps: *Tectonics*, v. 4, p. 687-704.
- Selverstone, J., Spear, F.S., Franz, G., and Morteani, G., 1984, High-pressure metamorphism in the SW Tauern Window, Austria; P-T paths from hornblende-kyanite-staurolite schists: *Journal of Petrology*, v. 25, p. 501-531.
- Sonder, L.J., England, P.C., Wernicke, B.P., and Christiansen, R.L., 1987, A physical model for Cenozoic extension of western North America, in Coward, P., Dewey, J., and Hancock, F., eds., *Continental extensional tectonics*, Volume 28: Geological Society Special Publications: London, United Kingdom, p. 187-201.
- Spear, F.S., 1992, Inverted metamorphism, P-T paths and cooling history of west-central New Hampshire; implications for the tectonic evolution of central New England, in Robinson, P., and Brady, J., eds., *New England Intercollegiate Geological Conference, Guidebook for field trips in the Connecticut Valley region of Massachusetts and adjacent states*, p. 446-466.
- Spear, F.S., and Harrison, T.M., 1989, Geochronologic studies in central New England; I, Evidence for pre-Acadian metamorphism in eastern Vermont: *Geology*, v. 17, p. 181-184.
- Stanley, R.S., and Ratcliffe, N.M., 1985, Tectonic synthesis of the Taconian orogeny in western New England: *Geological Society of America Bulletin*, v. 96, p. 1227-1250.
- Thompson, A. B., Tracy, R. J., Lyttle, P. T., and Thompson, J. B., Jr., 1977, Prograde reaction histories deduced from compositional zonation and mineral inclusions in garnet from the Gassetts Schist, Vermont: *American Journal of Science*, v. 277, p. 1152-1167.
- Thompson, J.B., Jr., 1950, A gneiss dome in southeastern Vermont: Ph.D. thesis: Massachusetts Institute of Technology, Cambridge, Mass., 149 p.
- Thompson, J.B., Jr., McLelland, J.M., and Rankin, D.W., 1990, Simplified geologic map of the Glens Falls 1 degrees X 2 degrees Quadrangle, New York, Vermont, and New Hampshire: Reston, VA, United States, U. S. Geological Survey, 1 sheet p.
- Thompson, J.B., Jr., Rosenfeld, J.L., and Chamberlain, C.P., 1993, Sequence and correlation of tectonic and metamorphic events in southeastern Vermont, in Cheney, J., T., and Hepburn, J.C., eds., *Field trip guidebook for the northeastern United States*, Geological Society of America, p. B.1-B.26.
- Tucker, R.D., Osberg, P.H., and Berry, H.N.I., 2001, The geology of a part of Acadia and the nature of the Acadian Orogeny across central and eastern Maine: *American Journal of Science*, v. 301, p. 205-260.
- Tucker, R.D., and Robinson, P., 1990, Age and setting of the Bronson Hill magmatic arc: A re-evaluation based on U-Pb zircon ages in southern New England: *Geological Society of America Bulletin*, v. 102, p. 1404-1419.
- Vance, D., and Holland, T., 1993, A detailed isotopic and petrological study of a single garnet from the Gassetts Schist, Vermont: *Contributions to Mineralogy and Petrology*, v. 114, p. 101-118.
- Walsh, G.J., and Aleinikoff, J.N., 1999, U-Pb zircon age of metafelsite from the Pinney Hollow Formation; implications for the development of the Vermont Appalachians: *American Journal of Science*, v. 299, p. 157-170.

